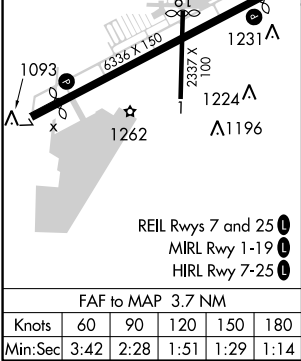
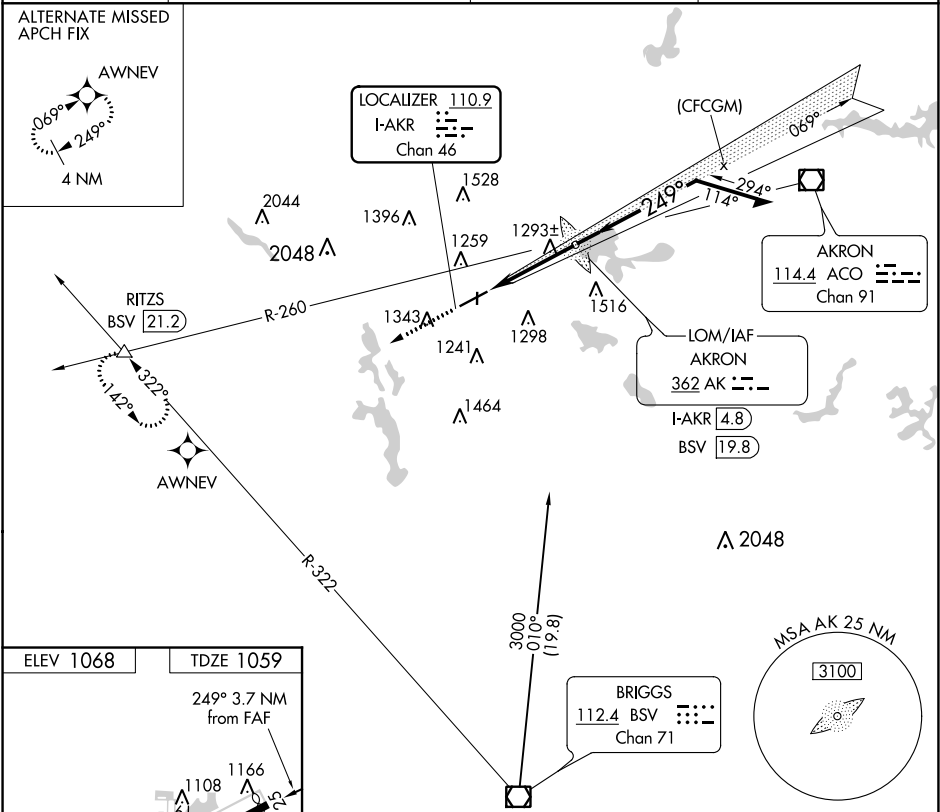


LOC/DME I-AKR 110.9 Chan 46	APP CRS 249°	Rwy Idg TDZE Apt Elev 6077 1059 1068
---	------------------------	--

LOC RWY 25
AKRON FULTON INTL (AKR)

ADF or DME or RADAR required for procedure entry.	MISSED APPROACH: Climb to 3100 on heading 249° and BSV VOR/DME R-322 to RITZS INT/BSV 21.2 DME and hold.
Rwy 25 helicopter visibility reduction below 1 SM NA.	

ASOS 126.825	CLEVELAND APP CON ★ 118.6 371.875	CLNC DEL 121.6	UNICOM 123.075 (CTAF) 0
------------------------	---	--------------------------	--



ELEV 1068	TDZE 1059	Visual Segment - Obstacles.			
249° 3.7 NM from FAF		Visual Segment - Obstacles.			
1093		Visual Segment - Obstacles.			
1108		Visual Segment - Obstacles.			
1166		Visual Segment - Obstacles.			
1231		Visual Segment - Obstacles.			
1224		Visual Segment - Obstacles.			
1196		Visual Segment - Obstacles.			
1262		Visual Segment - Obstacles.			
REIL Rwy 7 and 25		Visual Segment - Obstacles.			
MIRL Rwy 1-19		Visual Segment - Obstacles.			
HIRL Rwy 7-25		Visual Segment - Obstacles.			
FAF to MAP 3.7 NM		Visual Segment - Obstacles.			
Knots	60	90	120	150	180
Min:Sec	3:42	2:28	1:51	1:29	1:14
CIRCLING	1600-1	1680-1	1800-2	1840-2½	
	532 (600-1)	612 (700-1)	732 (800-2)	772 (800-2½)	

EC-2, 03 DEC 2020 to 31 DEC 2020

EC-2, 03 DEC 2020 to 31 DEC 2020