

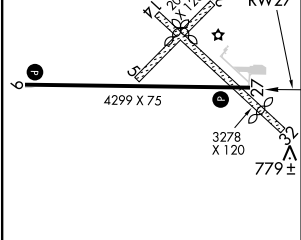
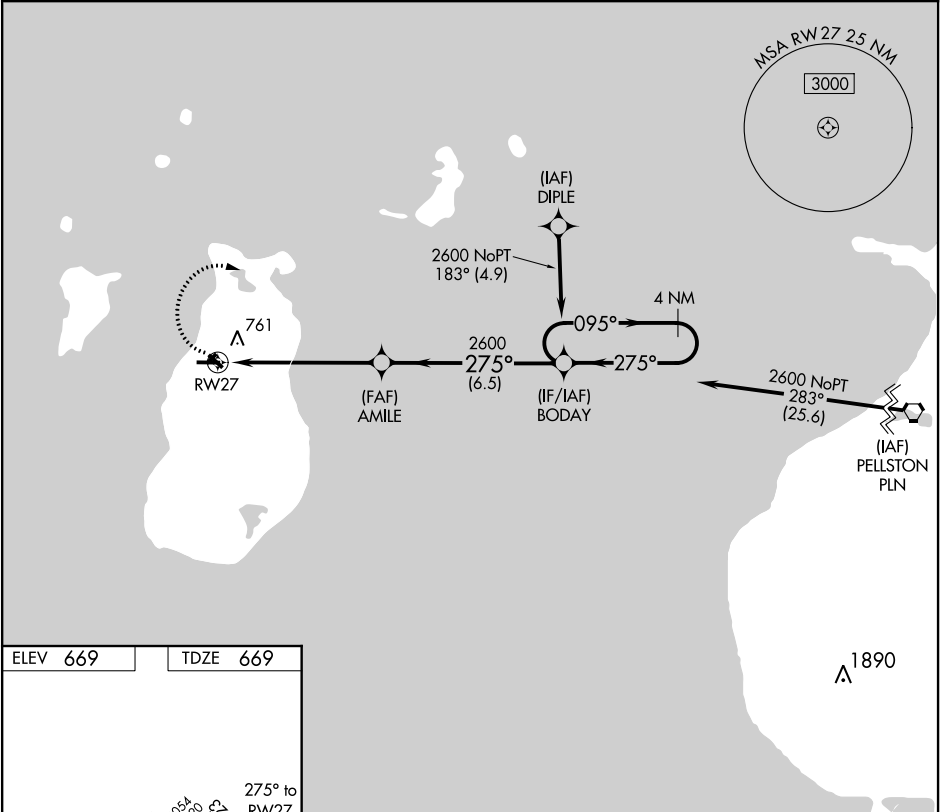
APP CRS	Rwy Idg	4299
275°	TDZE	669
	Apt Elev	669

RNAV (GPS) RWY 27

BEAVER ISLAND (SJX)

<div><div></div><div></div></div> <div>DME/DME RNP -0.3 NA. When local altimeter setting not received, use Pellston altimeter setting and increase all MDA 100 feet. Circling NA to Rws 5, 14, 23, 32.</div>	MISSED APPROACH: Climbing right turn to 2600 direct BODAY and hold.
--	---

AWOS-3 118.075	MINNEAPOLIS CENTER 134.6 354.05	UNICOM 122.8 (CTAF) 0
-------------------	------------------------------------	--------------------------



<div>2600</div> <div>BODAY</div>	<div>VGSI and descent angles not coincident (VGSI Angle 4.00/TCH 40).</div> <div>AMILE</div> <div>BODAY</div> <div>4 NM Holding Pattern</div>			
<div>RW27</div>	<div>2600</div> <div>275°</div> <div>095°</div> <div>2600</div>			
	<div>5.9 NM</div>	<div>6.5 NM</div>		
CATEGORY	A	B	C	D
LNAV MDA	1080-1	411 (500-1)	NA	
CIRCLING	1080-1 411 (500-1)	1120-1 451 (500-1)	NA	

MIRL Rwy 9-27 0
REIL Rws 9 and 27 0