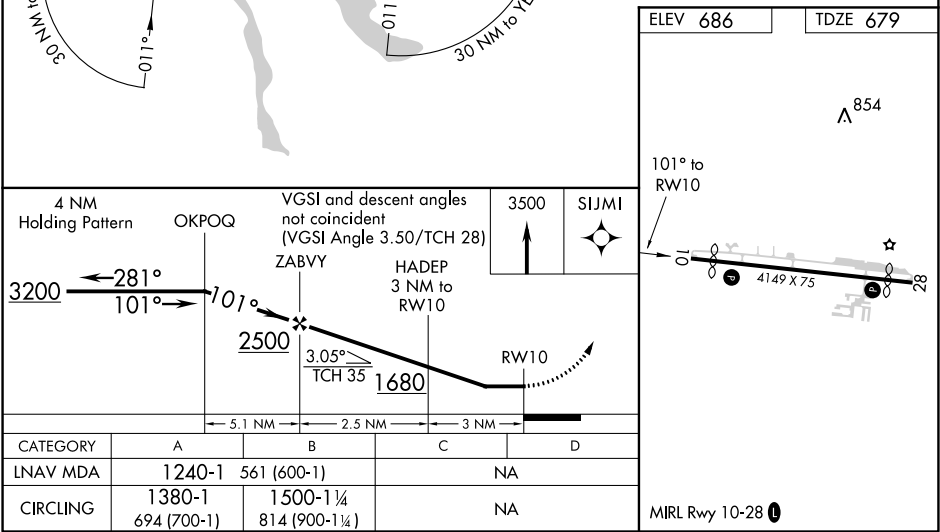
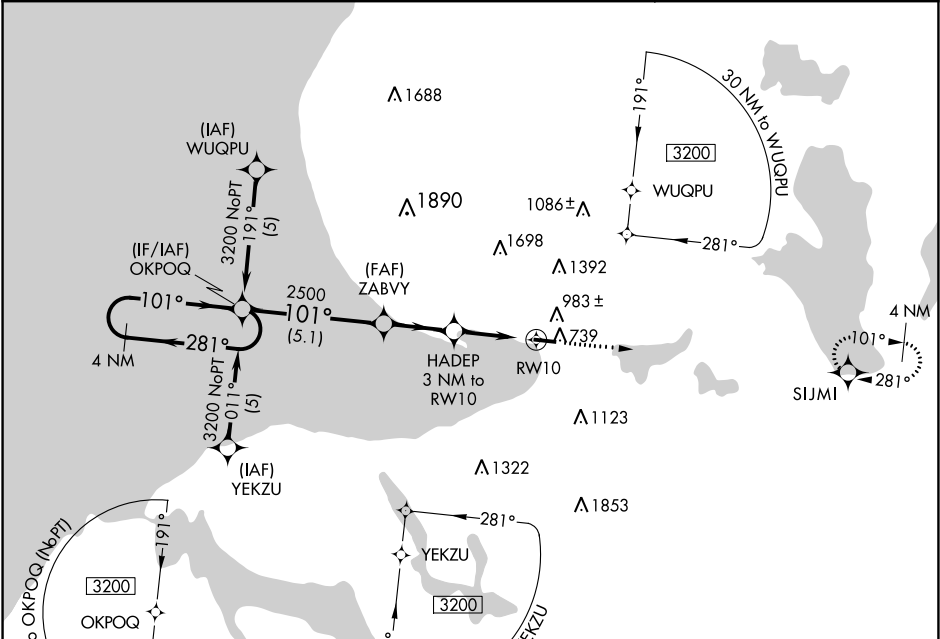


APP CRS	Rwy Idg	3712
101°	TDZE	679
	Apt Elev	686

RNAV (GPS) RWY 10
HARBOR SPRINGS (MGN)

<p>⚠ DME/DME RNP-0.3 NA. When local altimeter setting not received, use Pellston altimeter setting and increase all MDAs 40 feet. Procedure NA at night. Helicopter visibility reduction below 1 SM NA.</p>	<p>MISSED APPROACH: Climb to 3500 direct SIJMI and hold.</p>
--	---

AWOS-3 119.925	MINNEAPOLIS CENTER 134.6 354.05	UNICOM 122.8 (CTAF) 0
-------------------	------------------------------------	---------------------------------



EC-1, 03 DEC 2020 to 31 DEC 2020

EC-1, 03 DEC 2020 to 31 DEC 2020