

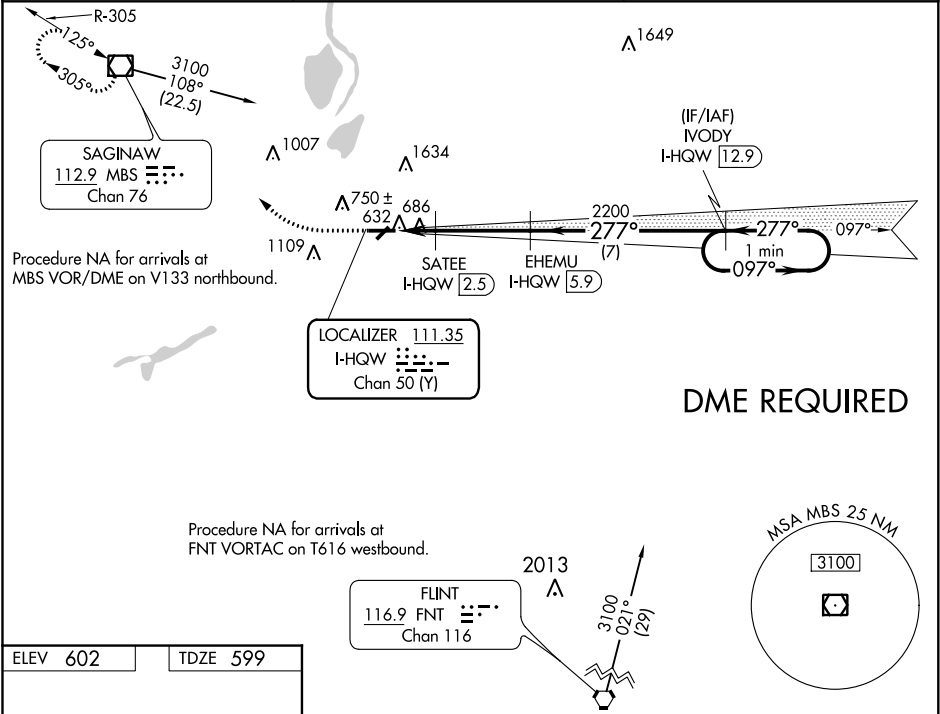
LOC/DME I-HQW <b>111.35</b> Chan <b>50 (Y)</b>	APP CRS <b>277°</b>	Rwy Idg TDZE Apt Elev	<b>5002</b> <b>599</b> <b>602</b>
--	------------------------	-----------------------------	---

ILS or LOC RWY 28

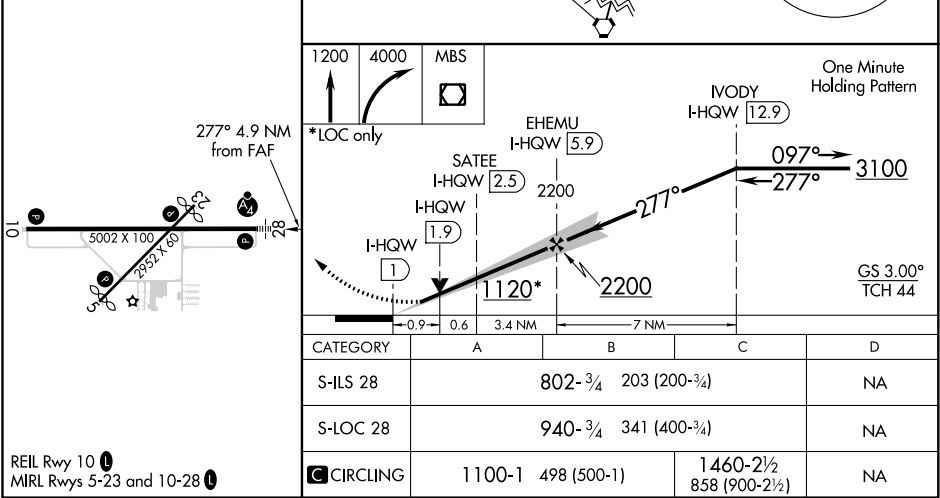
SAGINAW COUNTY H W BROWNE (HYX)

<b>⚠</b> Inoperative table does not apply to S-ILS 28. DME required. Circling Rwy 5, 23 NA at night. Circling NA for Cat C north of Rwy 10-28.	<b>MALSF</b> 	<b>MISSED APPROACH:</b> Climb to 1200 then climbing right turn to 4000 direct MBS VOR/DME and hold, continue climb-in-hold to 4000.
---	------------------	---

<b>AWOS-3</b> <b>118.325</b>	<b>GREAT LAKES APP CON★</b> <b>120.95 235.625</b>	<b>UNICOM</b> <b>122.8 (CTAF) 0</b>
---------------------------------	--	--



<b>ELEV 602</b>	<b>TDZE 599</b>
-----------------	-----------------



ILS or LOC RWY 28