

APP CRS
355°

Rwy Idg
4687

TDZE
719

Apf Elev
719

RNAV (GPS) RWY 35

BOYNE MOUNTAIN (BFA)

RNP APCH.

NA

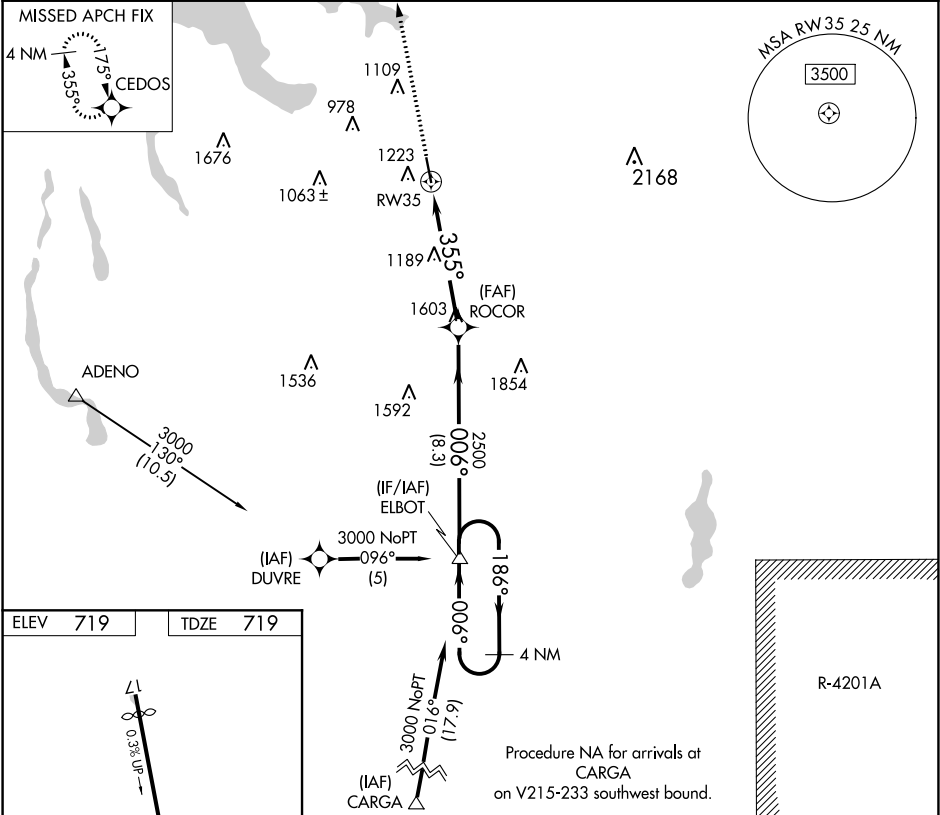
Use Bellaire altimeter setting; when not received, use Pellston altimeter setting. Procedure NA at night. Rwy 35 helicopter visibility reduction below 1 SM NA.

MISSED APPROACH: Climb to 3000 direct CEDOS and hold.

MINNEAPOLIS CENTER
134.6 354.05

UNICOM
122.8 (CTAF)

122.85



ELEV	719	TDZE	719
<div><div>REIL Rwy 17 and 35</div><div>LRL Rwy 17-35</div></div>			
<div><div>CATEGORY</div><div>A</div><div>1840-1¼</div><div>1121 (1200-1¼)</div></div> <div><div>CATEGORY</div><div>B</div><div>1840-1½</div><div>1121 (1200-1½)</div></div> <div><div>CATEGORY</div><div>C</div><div>1840-3</div><div>1121 (1200-3)</div></div> <div><div>CATEGORY</div><div>D</div><div></div><div></div></div>			