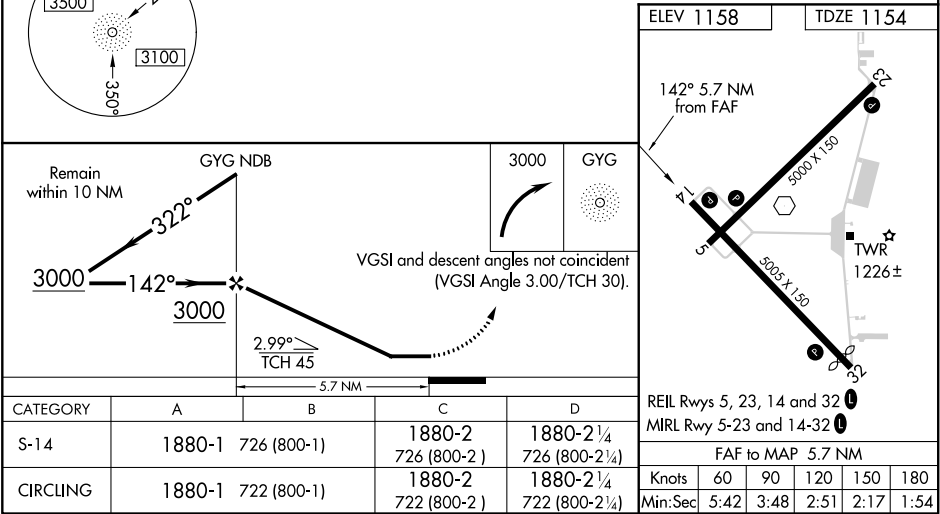
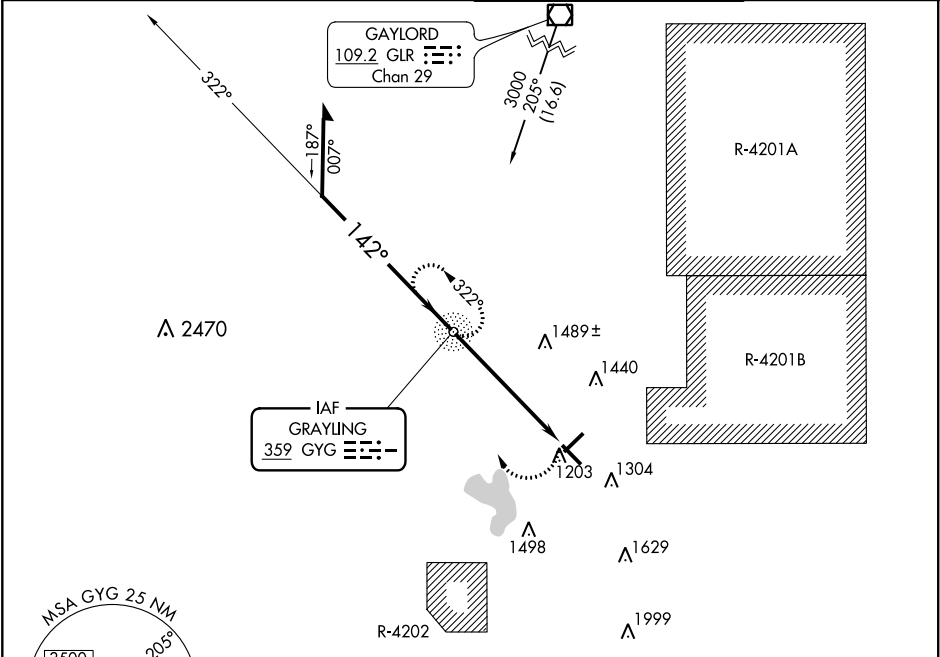


NDB GYG <b>359</b>	APP CRS <b>142°</b>	Rwy Idg TDZE Apt Elev	<b>5005</b> <b>1154</b> <b>1158</b>
-----------------------	------------------------	-----------------------------	---

**NDB RWY 14**  
GRAYLING AAF (GOV)

<b>▽</b> Circling Rwy 5, 23, 32 NA at night. Rwy 14 helicopter visibility reduction below ¾ SM NA. <b>▲</b> NA When local altimeter setting not received, use Houghton Lake altimeter setting and increase all MDAs 60 feet and visibility Cat B/C/D ½ SM.	<b>MISSED APPROACH:</b> Climbing right turn to 3000 direct GYG NDB and hold.
---	--

ATIS <b>119.075</b>	MINNEAPOLIS CENTER <b>125.475 269.45</b>	GRAYLING TOWER ★ <b>126.2 (CTAF) 0</b>	GND CON <b>121.9</b>
------------------------	---	---	-------------------------



EC-1, 03 DEC 2020 to 31 DEC 2020

EC-1, 03 DEC 2020 to 31 DEC 2020