

WAAS CH 40418	APP CRS 296°	Rwy Idg TDZE	4304 867
W29A		Apt Elev	869

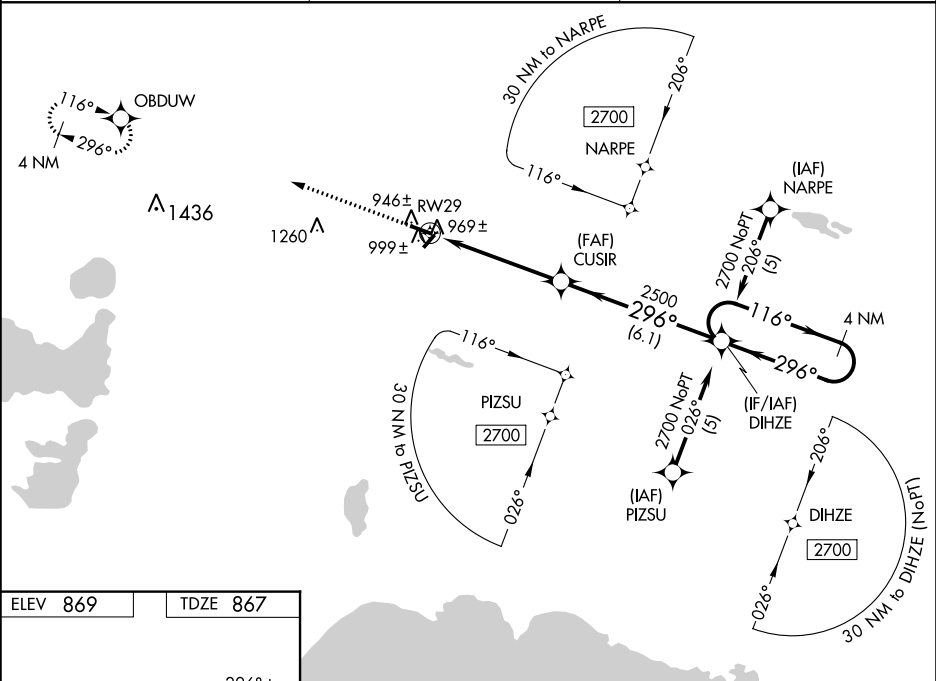
RNAV (GPS) RWY 29

LUCE COUNTY (ERY)

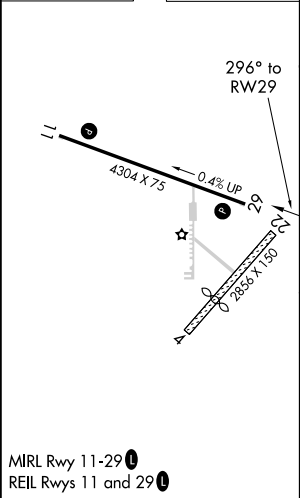
⚠ For uncompensated Baro-VNAV systems, LNAV/VNAV NA below -16°C (4°F) or above 47°C (116°F). DME/DME RNP-0.3 NA. Visibility reduction by helicopters NA. When local altimeter setting not received, use Chippewa Co Intl altimeter setting and increase all DA 105 feet and all MDA 120 feet, increase LPV and LNAV/VNAV visibility ¼ mile all Cats, LNAV Cats C and D ½ mile, and Circling Cat D ¼ mile. Baro-VNAV NA when using Chippewa Co Intl altimeter setting.

MISSED APPROACH:
Climb to 2700 direct
OBDUW and hold.

AWOS-3 119.525	MINNEAPOLIS CENTER 134.6 354.05	UNICOM 122.8 (CTAF) 0
--------------------------	---	---------------------------------



ELEV 869	TDZE 867
-----------------	-----------------



2700	OBDUW	VGSI and RNAV glidepath not coincident (VGSI Angle 3.00/TCH 35).		DIHZE	4 NM Holding Pattern
		CUSIR			
		2500			
		2500			
		5 NM	6.1 NM		
CATEGORY	A	B	C	D	
LPV DA		1117-1	250 (300-1)		
LNAV/VNAV DA		1239-1½	372 (400-1½)		
LNAV MDA		1260-1	393 (400-1)		1260-1¼ 393 (400-1¼)
CIRCLING	1300-1 431 (500-1)	1320-1 451 (500-1)	1320-1½ 451 (500-1½)	1420-2 551 (600-2)	