

APP CRS  
**004°**

Rwy Idg  
TDZE  
Apt Elev

**N/A**  
**N/A**  
**671**

**RNAV (GPS)-A**  
TOLEDO SUBURBAN (DUH)

RNP APCH.

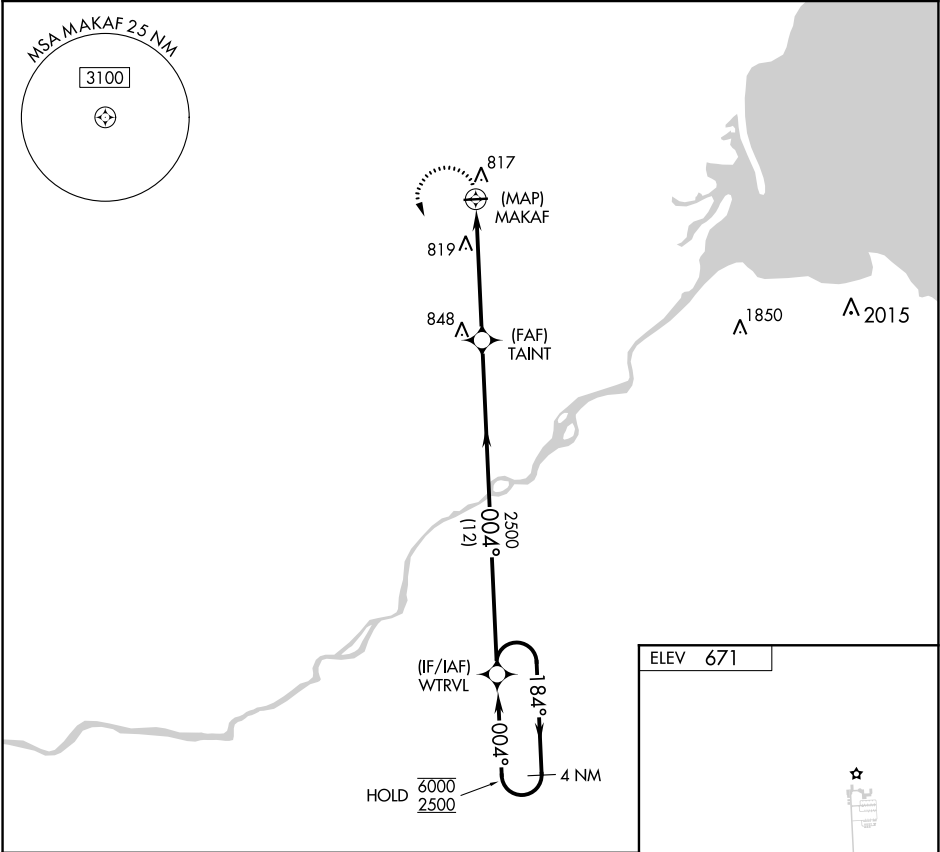
▼ Procedure NA at night.

MISSED APPROACH: Climbing left turn to 2500  
direct WTRVL and hold.

AWOS-3  
**119.175**

TOLEDO APP CON  
**126.1 317.55**

UNICOM  
**122.7 (CTAF) 0**



2500 WTRVL

MAKAF

TAIN

WTRVL

4 NM Holding Pattern

004°

184°

6000 2500

5.1 NM

12 NM

004° 5.1 NM from FAF

| CATEGORY | A                  | B | C                    | D  |
|----------|--------------------|---|----------------------|----|
| CIRCLING | 1180-1 509 (600-1) |   | 1180-1½ 509 (600-1½) | NA |

MIRL Rwy 9-27 0

EC-1, 03 DEC 2020 to 31 DEC 2020

EC-1, 03 DEC 2020 to 31 DEC 2020