

WAAS CH <b>49222</b> <b>W08A</b>	APP CRS <b>084°</b>	Rwy Idg <b>6002</b> TDZE <b>698</b> Apt Elev <b>698</b>
--	------------------------	---

RNAV (GPS) RWY 8

WEST MICHIGAN RGNL (BIV)

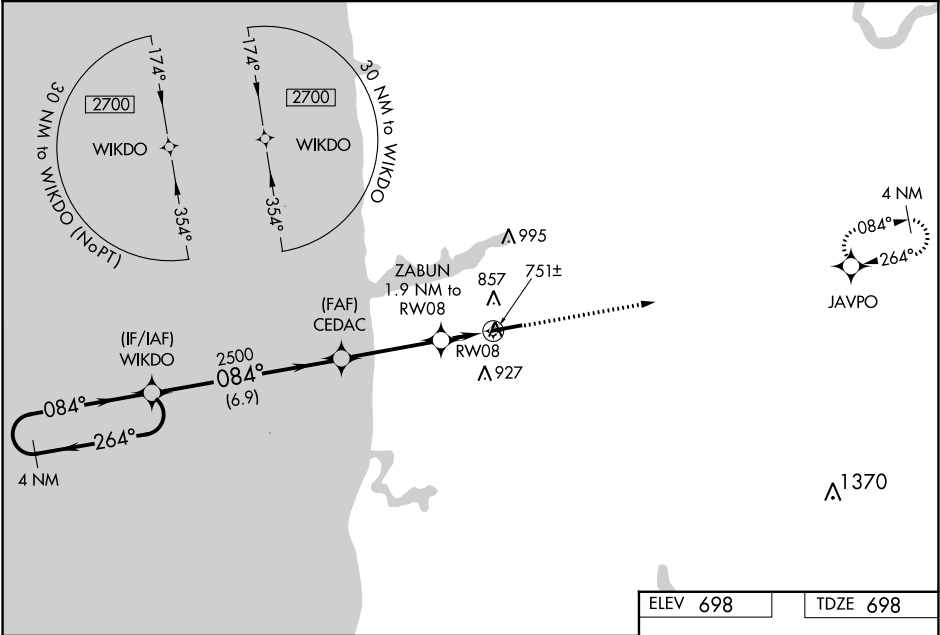
⚠

Baro-VNAV NA when using Muskegon County altimeter setting. For uncompensated Baro-VNAV systems, LNAV/VNAV NA below -16°C (4°F) or above 54°C (130°F). When local altimeter setting not received, use Muskegon County altimeter setting and increase LPV DA to 1018, increase LPV all Cats visibility ¼ mile; increase LNAV/VNAV DA to 1050, increase LNAV/VNAV all Cats visibility ⅓ mile; increase all MDA 80 feet, increase LNAV Cat C/D visibility ⅓ mile. DME/DME RNP-0.3 NA. VDP NA when using Muskegon County altimeter setting.

MISSED APPROACH:

Climb to 3000 direct JAVPO and hold.

ASOS <b>119.025</b>	GREAT LAKES APP CON* <b>133.825 290.35</b>	CLNC DEL <b>123.95</b>	UNICOM <b>123.05 (CTAF) 1</b>
------------------------	---	---------------------------	----------------------------------



4 NM Holding Pattern WIKDO		*LNAV only		3000	JAVPO
2700 ← 264° 084° →		CEDAC 2500		ZABUN 1.9 NM to RW08	
GP 3.00° TCH 40		2500		1 NM to RW08	
6.9 NM		3.6 NM		0.9 NM	
CATEGORY		A		B	
LPV DA		948- 7/8		250 (300- 7/8)	
LNAV/VNAV DA		980- 7/8		282 (300- 7/8)	
LNAV MDA		1060-1		362 (400-1)	
CIRCLING		1200-1 502 (600-1)		1200-1½ 502 (600-1½)	
				1260-2 562 (600-2)	

ELEV 698

TDZE 698

REIL Rwy 8 1

HIRL Rwy 8-26 1