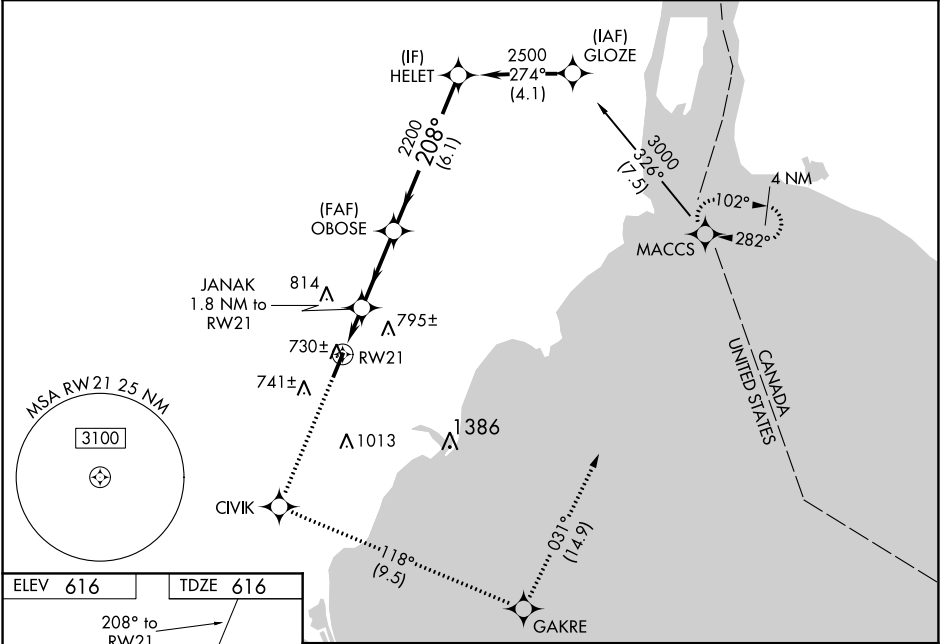


WAAS CH <b>86707</b> <b>W21A</b>	APP CRS <b>208°</b>	Rwy Idg TDZE <b>616</b> Apt Elev <b>616</b>	<b>4997</b>
--	------------------------	---	-------------

RNAV (GPS) RWY 21

CUSTER (TTF)

RNP APCH. <div><div></div><div>For uncompensated Baro-VNAV systems, LNAV/VNAV NA below -16°C (4°F) or above 47°C (116°F). When local altimeter setting not received, use Detroit Metropolitan Wayne County altimeter setting and increase LPV DA 43 feet and all visibilities ¼ SM, LNAV/VNAV DA 138 feet and all visibilities ½ SM and all MDA 60 feet and Cat C visibilities ¼ SM. Baro-VNAV and VDP NA when using Detroit Metropolitan Wayne County altimeter setting.</div></div>		MISSED APPROACH: Climb to 3000 direct CIVIK and on track 118° to GAKRE and on track 031° to MACCS and hold.
AWOS-3 <b>119.075</b>	DETROIT APP CON <b>134.3 363.2</b>	UNICOM <b>122.7 (CTAF) 0</b>



RWY 21

4997 X 100

208°

3

☆

674±

REIL Rwy 21

MIRL Rwy 3-21

3000	CIVIK	fr 118°	GAKRE	fr 031°	MACCS	VGSi and RNAV glidepath not coincident (VGSi Angle 3.50/TCH 49).				HELET
*LNAV only.		JANAK 1.8 NM to RW21		OBOSE 2200		2500		208°		GP 3.00° TCH 42
RW21		*0.9 NM to RW21		*1220		2200		2200		
0.9 NM		0.9 NM		3 NM		6.1 NM				
CATEGORY		A		B		C		D		
LPV DA		966-1¼		350 (400-1¼)						
LNAV/VNAV DA		1009-1½		393 (400-1½)						
LNAV MDA		980-1		364 (400-1)		980-1¼		364 (400-1¼)		
CIRCLING		1120-1 504 (600-1)		1180-1 564 (600-1)		1180-1½ 564 (600-1½)		1180-2 564 (600-1)		