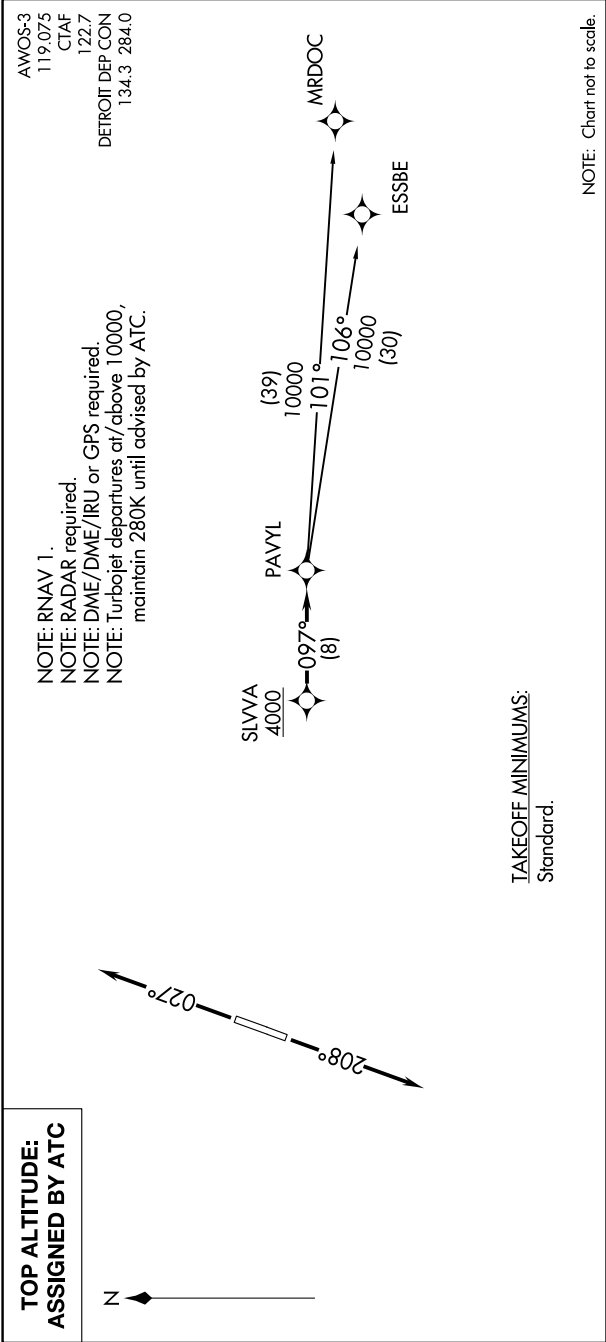


EC-1, 03 DEC 2020 to 31 DEC 2020



DEPARTURE ROUTE DESCRIPTION

TAKEOFF RUNWAY 3: Climb on heading 027° or as assigned for RADAR vectors to cross SLVVA at or above 4000, thence....
TAKEOFF RUNWAY 21: Climb on heading 208° or as assigned for RADAR vectors to cross SLVVA at or above 4000, thence....
....on track 097° to PAVYL, then on (transition). Maintain ATC assigned altitude, expect filed altitude 10 minutes after departure.
ESSBE TRANSITION (PAVYL2.ESSBE):
MRDOC TRANSITION (PAVYL2.MRDOC):

EC-1, 03 DEC 2020 to 31 DEC 2020