

APP CRS	Rwy Idg	5001
095°	TDZE	684
	Apt Elev	684

RNAV (GPS) RWY 10

SCHOOLCRAFT COUNTY (ISQ)

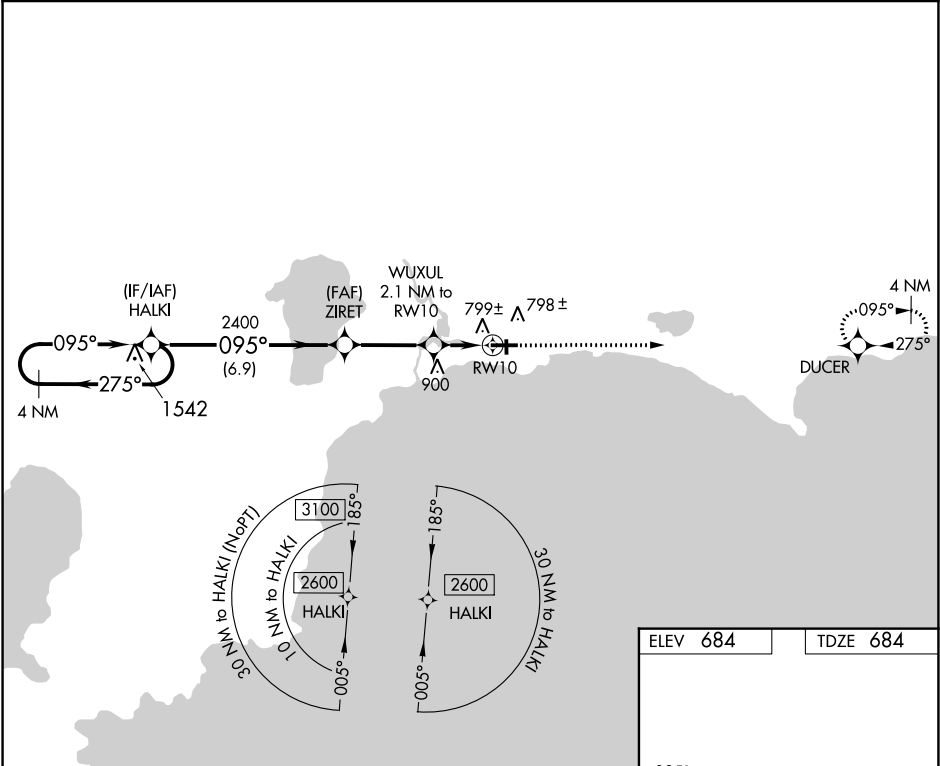
▼

▲

DME/DME RNP-0.3 NA. Helicopter visibility reduction below 1 SM NA. When local altimeter setting not received, use Beaver Island altimeter setting and increase all MDA 80 feet, increase LNAV Cat C and D visibility 3⁄8 mile. When VGSI inop, Straight-In/Circling Rwy 10 procedure NA at night. When VGSI inop, Circling Rwy 28 NA at night. Night landing: Rwy 1, 19 NA.

MISSED APPROACH:
Climb to 2600 direct
DUCER and hold.

AWOS-3 118.775	MINNEAPOLIS APP CON 134.6 354.05	UNICOM 122.8 (CTAF) 0
-------------------	-------------------------------------	--------------------------



4 NM Holding Pattern

2600

275°

095°

HALKI

2400

095°

ZIRET

3.00° TCH 35

1380

6.9 NM

3.2 NM

2.1 NM

WUXUL 2.1 NM to RW10

RW10

2600

DUCER

095° to RW10

61

5001 X 100

2501

28

1

CATEGORY	A	B	C	D
LNAV MDA	1060-1 376 (400-1)			
CIRCLING	1120-1 436 (500-1)	1140-1 456 (500-1)	1140-1½ 456 (500-1½)	1260-2 576 (600-2)

REIL Rwy 28 0
MIRL Rwy 10-28 0