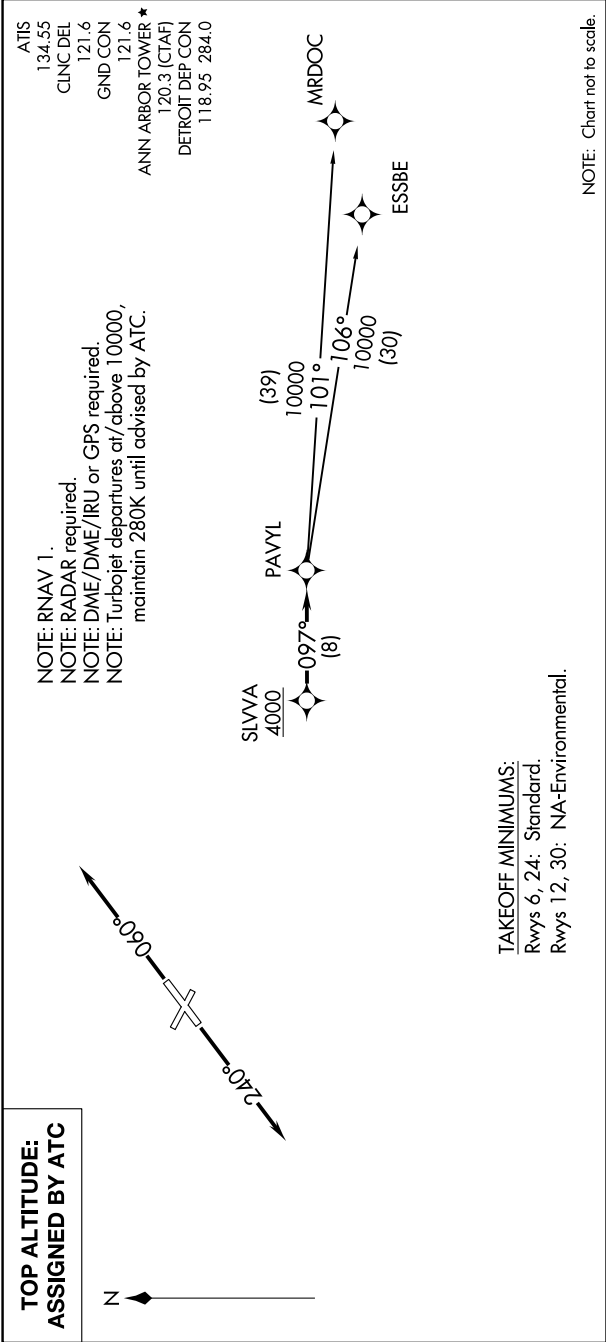


EC-1, 03 DEC 2020 to 31 DEC 2020



DEPARTURE ROUTE DESCRIPTION

TAKEOFF RUNWAY 6: Climb on heading 060° or as assigned for RADAR vectors to cross SLVVA at or above 4000, thence...

TAKEOFF RUNWAY 24: Climb on heading 240° or as assigned for RADAR vectors to cross SLVVA at or above 4000, thence....

....on track 097° to PAVYL, then on (transition). Maintain ATC assigned altitude, expect filed altitude 10 minutes after departure.

ESSBE TRANSITION (PAVYL2.ESSBE):

MRDOC TRANSITION (PAVYL2.MRDOC):

EC-1, 03 DEC 2020 to 31 DEC 2020