

WAAS  
CH **69601**  
**W13A**

APP CRS  
**132°**

Rwy Idg  
TDZE **962**  
Apt Elev **962**

**RNAV (GPS) RWY 13**

LIVINGSTON COUNTY SPENCER J HARDY (OZW)

RNP APCH.

▼

For uncompensated Baro-VNAV systems, LNAV/VNAV NA below -1.6°C or above 37°C. For inop ALS, increase LNAV/VNAV all Cats visibility to ¾ SM.

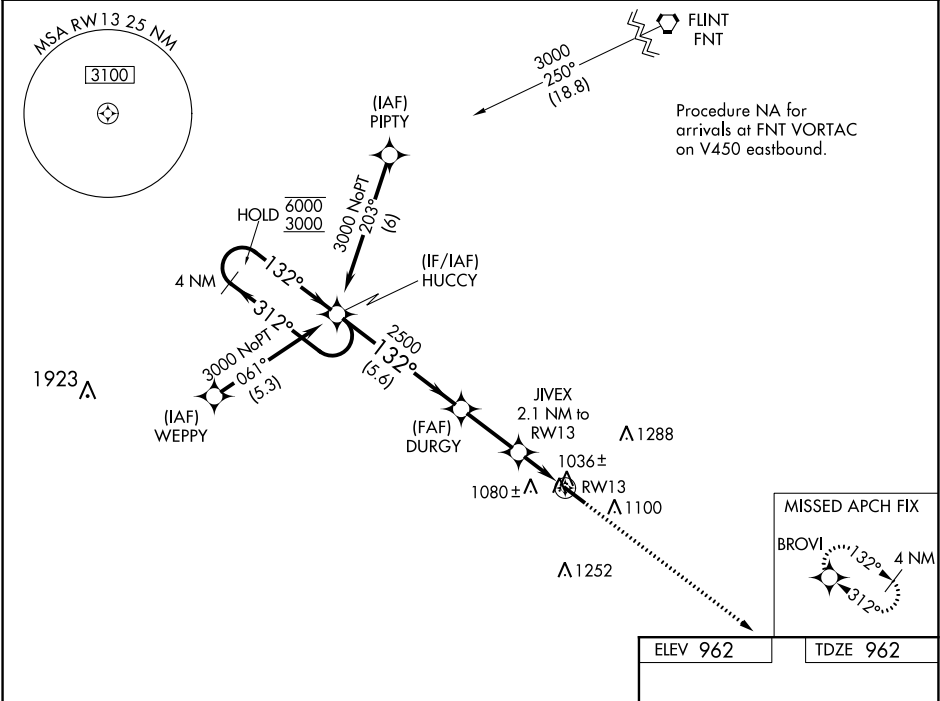
MALSR

AS

MISSED APPROACH:

Climb to 2800 direct BROVI and hold.

AWOS-3 <b>118.875</b>	DETROIT APP CON <b>132.35 284.0</b>	CLNC DEL <b>121.725 (GCO)</b>	UNICOM <b>123.0 (CTAF) 0</b>
--------------------------	--	----------------------------------	---------------------------------



4 NM Holding Pattern HUCCY

GP 3.00° TCH 48

6000 3000

312° 132°

2500

5.6 NM 2.6 NM 1.2 0.9

2800 BROVI

JIVEX 2.1 NM to RWY 13

\*0.9 NM to RWY 13

\*1660

\*LNAV only

132° to RWY 13

5002 X 100

0.4° UP

CATEGORY	A	B	C	D
LPV DA		1162-½	200 (200-½)	
LNAV/VNAV DA		1212-½	250 (300-½)	
LNAV MDA		1300-½	338 (400-½)	
CIRCLING	1400-1 438 (500-1)	1420-1 458 (500-1)	1420-1½ 458 (500-1½)	1520-2 558 (600-2)

ELEV 962

TDZE 962

HIRL Rwy 13-31 0

REIL Rwy 31 0