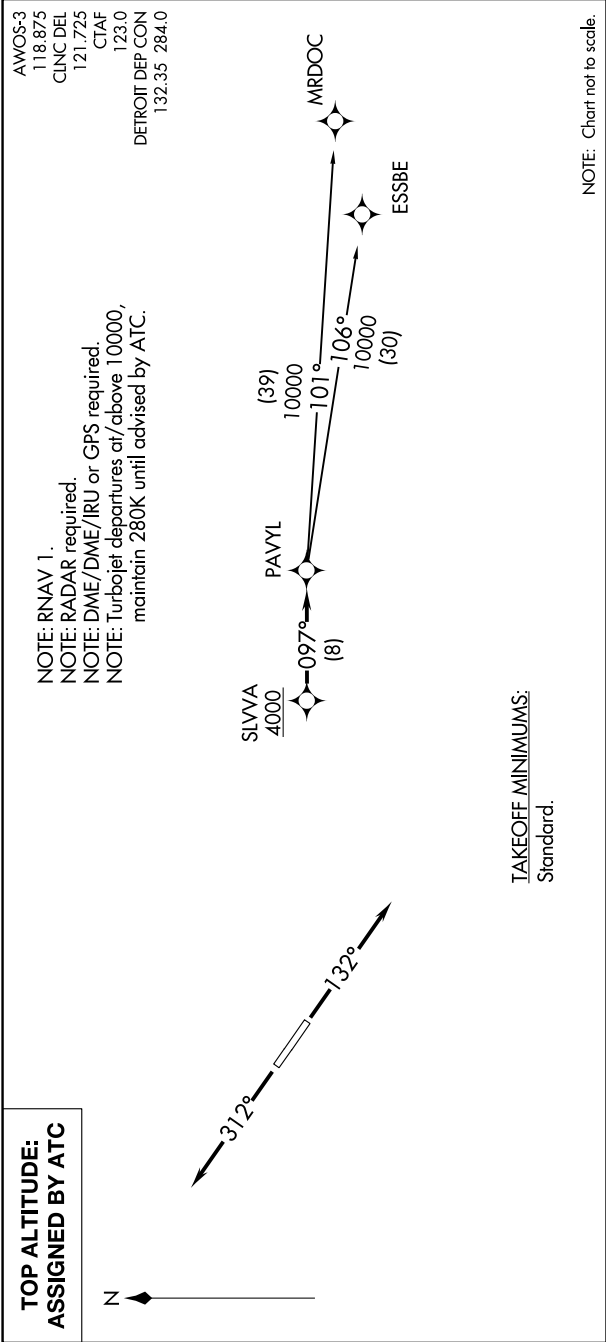


EC-1, 03 DEC 2020 to 31 DEC 2020



DEPARTURE ROUTE DESCRIPTION

TAKEOFF RUNWAY 13: Climb on heading 132° or as assigned for RADAR vectors to cross SLVVA at or above 4000, thence....  
TAKEOFF RUNWAY 31: Climb on heading 312° or as assigned for RADAR vectors to cross SLVVA at or above 4000, thence....  
.....on track 097° to PAVYL, then on (transition). Maintain ATC assigned altitude, expect filed altitude 10 minutes after departure.  
ESSBE TRANSITION (PAVYL2.ESSBE):  
MRDOC TRANSITION (PAVYL2.MRDOC):

EC-1, 03 DEC 2020 to 31 DEC 2020