

WAAS
CH **45533**
W28A

APP CRS
282°

Rwy Idg
TDZE
Apt Elev

3501
941
941

RNAV (GPS) RWY 28
BROOKS FIELD (RMY)

⚠

⚠

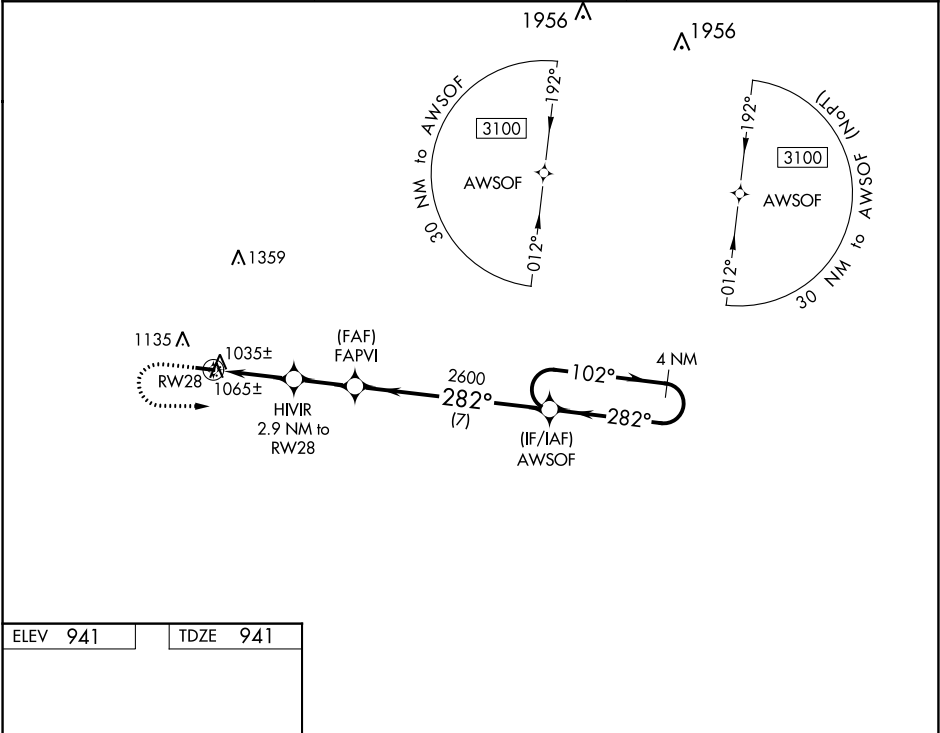
DME/DME RNP-0.3 NA. VDP NA with Battle Creek altimeter setting.
When local altimeter setting not received, use Battle Creek altimeter setting and increase all MDA 40 feet; increase LP and LNAV Cat C visibility 1/8 mile.
Helicopter visibility reduction below 3/4 SM NA. Night landing: Rwy 10 NA.

MISSED APPROACH: Climb to 1500 then climbing left turn to 3100 direct AWSOF and hold.

AWOS-3
120.025

GREAT LAKES APP CON ★
119.2 239.25

UNICOM
122.8 (CTAF) 0



ELEV 941

TDZE 941

1500

3100

AWSOF

VGSI and descent angles not coincident
(VGSI Angle 4.00/TCH 37).

4 NM Holding Pattern

HIVIR
2.9 NM to RW28

FAPVI

2600

1900

3100

102°

282°

282°

102°

2.9 NM

2.2 NM

7 NM

CATEGORY	A	B	C	D
LP MDA	1300-1 359 (400-1)			NA
LNAV MDA	1320-1	379 (400-1)	1320-1 1/8 379 (400-1 1/8)	NA
CIRCLING	1440-1	499 (500-1)	1440-1 1/2 499 (500-1 1/2)	NA

MIRL Rwy 10-28 0

3501 X 75

28

282° to RW28

Ultralight Area