

WAAS CH <b>53523</b> <b>W04A</b>	APP CRS <b>043°</b>	Rwy Idg TDZE <b>647</b> Apt Elev <b>650</b>
--	------------------------	---

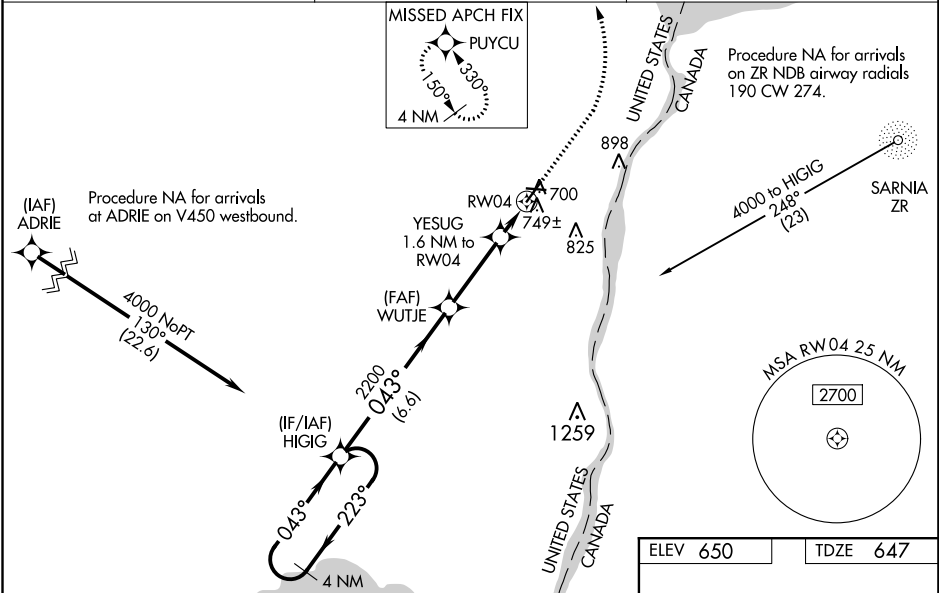
RNAV (GPS) RWY 4  
ST CLAIR COUNTY INTL (PHN)

**⚠** DME/DME RNP-0.3 NA. For uncompensated Baro-VNAV systems, LNAV/VNAV NA below -16°C (4°F) or above 54°C (130°F). Baro-VNAV and VDP NA when using Troy altimeter setting. When local altimeter setting not recieved, use Troy altimeter setting and increase all DA 95 feet; increase all MDA 100 feet and increase LNAV/VNAV all Cats, LNAV Cat C and D and Circling Cat C and D visibility ¼ mile. For inoperative MALSR, increase LNAV/VNAV all Cats visibility to ¾ mile. For inoperative MALSR when using Troy altimeter setting, increase LNAV/VNAV all Cats visibility to 1 ½ mile. Night Landing: Rwy 10, 22, 28 NA.

**MALSR**

**MISSED APPROACH:**  
Climb to 1100 then climbing left turn to 4000 direct PUYCU and hold, continue climb-in-hold to 4000.

AWOS-3 <b>118.375</b>	SELFTRIDGE APP CON ★ <b>119.6 391.9</b>	UNICOM <b>123.05 (CTAF) 0</b>
--------------------------	--	----------------------------------



4 NM Holding Pattern

HIGIG

4000 ← 223° 043° →

GP 3.00° TCH 55

WUTJE 2200

YESUG 1.6 NM to RW04

\* 1 NM to RW04

RW04

\* 1200

6.6 NM 3.1 NM 0.6 1 NM

1100 4000 PUYCU

\* LNAV only.

ELEV 650 TDZE 647

043° to RW04

HIRL Rwy 4-22 0  
MIRL Rwy 10-28 0  
REIL Rws 10, 22, and 28 0

CATEGORY	A	B	C	D
LPV DA	847-½		200 (200-½)	
LNAV/VNAV DA	930-½		283 (300-½)	
LNAV MDA	1000-½ 353 (400-½)		1000-⅝ 353 (400-⅝)	
<b>C</b> CIRCLING	1160-1 510 (600-1)		1260-1¾ 610 (700-1¾) 1260-2 610 (700-2)	

EC-1, 03 DEC 2020 to 31 DEC 2020

EC-1, 03 DEC 2020 to 31 DEC 2020