

WAAS CH 97723 W22A	APP CRS 223°	Rwy ldg 5104 TDZE 649 Apt Elev 650
--	------------------------	---

RNAV (GPS) RWY 22

ST CLAIR COUNTY INTL (PHN)

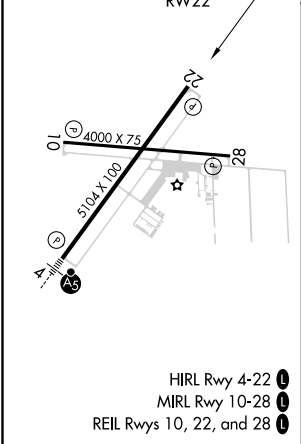
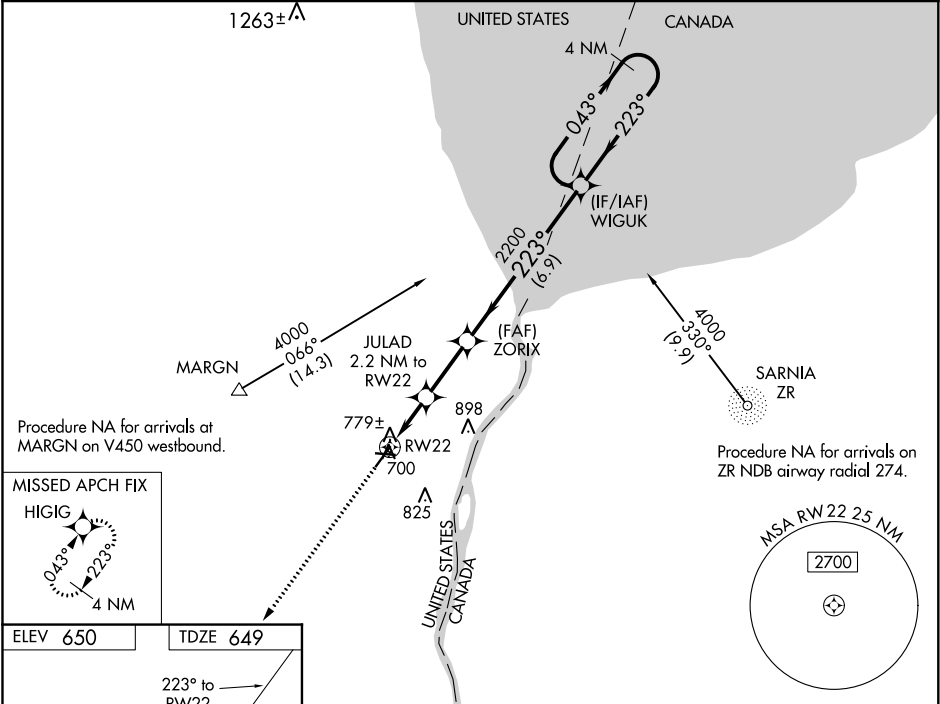
⚠

DME/DME RNP-0.3 NA. When local altimeter setting not received, use Troy altimeter setting and increase all MDA 100 feet; increase LP Cat C and D visibility ¾ mile and LNAV and Circling Cats C and D visibility ½ mile.
Night landing: Rwy 22, 10, 28 NA. Helicopter visibility reduction below 1 SM NA.

MISSED APPROACH:

Climb to 4000 direct
HIGIG and hold, continue
climb-in-hold to 4000.

AWOS-3 118.375	SELFIDGE APP CON ★ 119.6 391.9	UNICOM 123.05 (CTAF) 0
--------------------------	--	----------------------------------



4000	HIGIG	VGSI and descent angles not coincident (VGSI Angle 3.00/TCH 31).			4 NM Holding Pattern			
ZORIX								
JULAD 2.2 NM to RW22								
RW22								
2200								
1400								
2.2 NM 2.5 NM 6.9 NM								
CATEGORY	A	B	C	D				
LP	MDA	1020-1 371 (400-1)						
LNAV	MDA	1040-1 391 (400-1)		1040-1½ 391 (400-1½)				
CIRCLING		1160-1 510 (600-1)		1260-1¾ 610 (700-1¾) 1260-2 610 (700-2)				