

WAAS CH 86413 W07A	APP CRS 070°	Rwy Idg 5000 TDZE 1307 Apt Elev 1307
--	------------------------	---

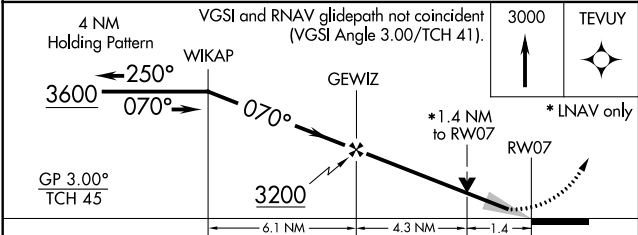
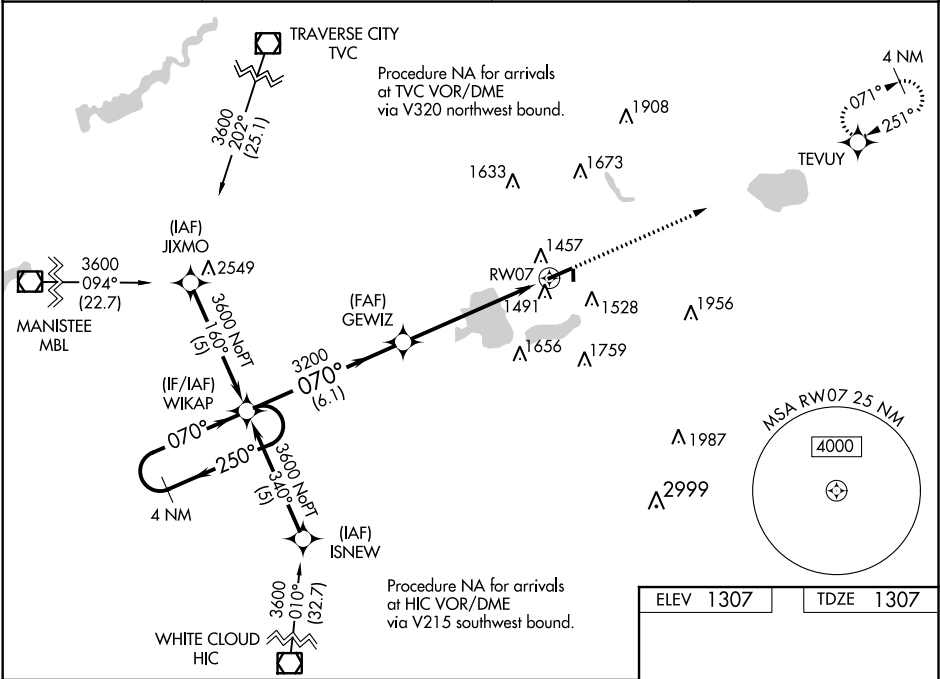
RNAV (GPS) RWY 7
WEXFORD COUNTY (CAD)

⚠ DME/DME RNP-0.3 NA. When local altimeter setting not received, use Houghton Lake altimeter setting and increase all DA 137 feet and all MDA 140 feet, LPV and RNAV/VNAV visibility ½ mile all Cats, RNAV Cats C/D visibility ½ mile, Circling Cat C visibility ½ mile and Cat D visibility ¼ mile. Inop table does not apply to RNAV Cat C visibilities. For uncompensated Baro-VNAV systems, RNAV/VNAV NA below -17°C (2°F) or above 46°C (114°F). Baro-VNAV and VDP NA when using Houghton Lake altimeter setting.

MAISF

MISSED APPROACH:
Climb to 3000 direct TEVUY and hold.

AWOS-3 128.325	MINNEAPOLIS CENTER 132.9 338.3	GCO 121.725	UNICOM 122.8 (CTAF) 0
--------------------------	--	-----------------------	---------------------------------



CATEGORY	A	B	C	D
LPV DA		1507-¾	200 (200-¾)	
RNAV/VNAV DA		1761-1½	454 (500-1½)	
RNAV MDA	1780-¾ 473 (500-¾)	1780-1¼ 473 (500-1¼)	1780-1½ 473 (500-1½)	
CIRCLING	1900-1 593 (600-1)	1900-1½ 593 (600-1½)	1900-2 593 (600-2)	

ELEV 1307 TDZE 1307

HIRL Rwy 7-25 0
REIL Rwy 7 and 25 0

EC-1, 03 DEC 2020 to 31 DEC 2020

EC-1, 03 DEC 2020 to 31 DEC 2020