

WAAS CH <b>97513</b> <b>W25A</b>	APP CRS <b>250°</b>	Rwy Idg TDZE <b>1305</b> Apt Elev <b>1307</b>
--	------------------------	---

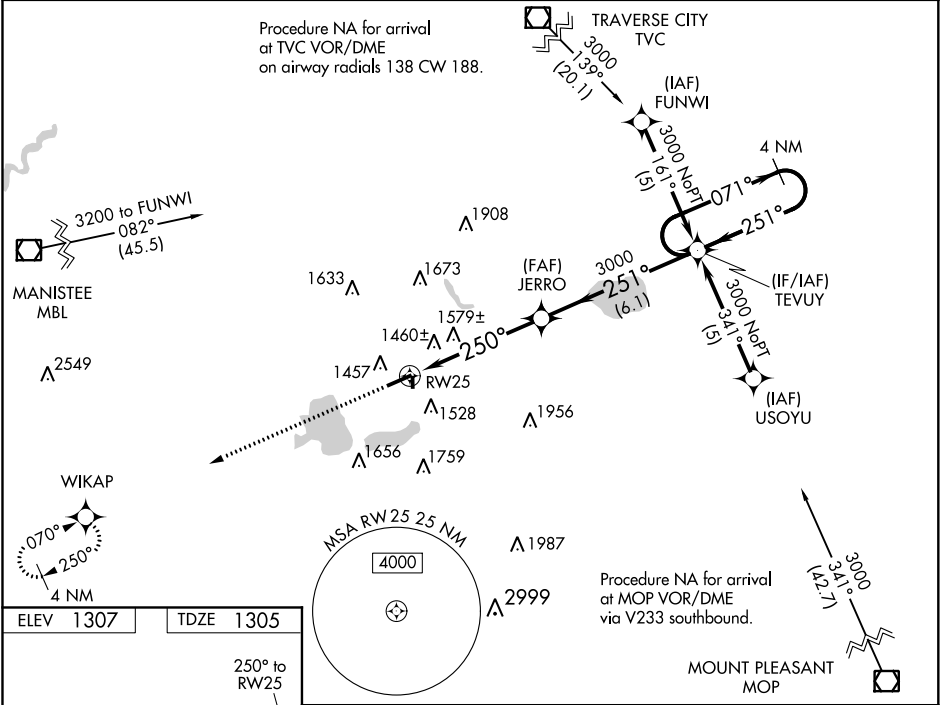
**RNAV (GPS) RWY 25**  
WEXFORD COUNTY (CAD)

**⚠** DME/DME RNP-0.3 NA. Visibility reduction by helicopters NA. For uncompensated Baro-VNAV systems, LNAV/VNAV NA below -17°C (2°F) or above 46°C (114°F).

**⚠** Baro-VNAV and VDP NA when using Houghton Lake altimeter setting. When local altimeter setting not received, use Houghton Lake altimeter setting and increase all DA 137 feet, all MDA 140 feet, LPV and LNAV/VNAV visibilities all Cats ½ mile, LNAV visibilities Cats C and D ½ mile, Circling visibilities Cat C ½ mile and Cat D ¼ mile.

MISSED APPROACH: Climb to 3600 direct WIKAP and hold.

AWOS-3 <b>128.325</b>	MINNEAPOLIS CENTER <b>132.9 338.3</b>	GCO <b>121.725</b>	UNICOM <b>122.8 (CTAF) 0</b>
--------------------------	--	-----------------------	---------------------------------



ELEV 1307

TDZE 1305

250° to RW25

1353

5000 X 100

2000 X 150

36

3600

WIKAP

JERRO

TEVUY

4 NM Holding Pattern

GP 3.00° TCH 44

CATEGORY	A	B	C	D
LPV DA	1625-1¼		320 (400-1¼)	
LNAV/VNAV DA	1869-2		564 (600-2)	
LNAV MDA	1840-1	535 (600-1)	1840-1½ 535 (600-1½)	1840-1¾ 535 (600-1¾)
CIRCLING	1900-1	593 (600-1)	1900-1½ 593 (600-1½)	1900-2 593 (600-2)

HIRL Rwy 7-25 0

REIL Rwy 7 and 25 0

EC-1, 03 DEC 2020 to 31 DEC 2020

EC-1, 03 DEC 2020 to 31 DEC 2020