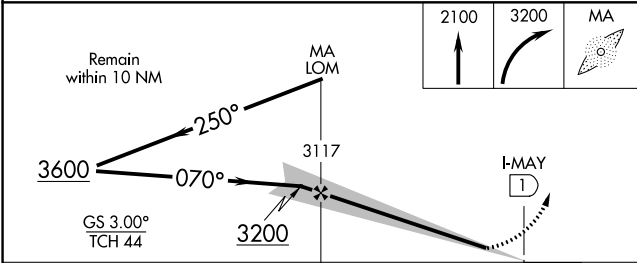
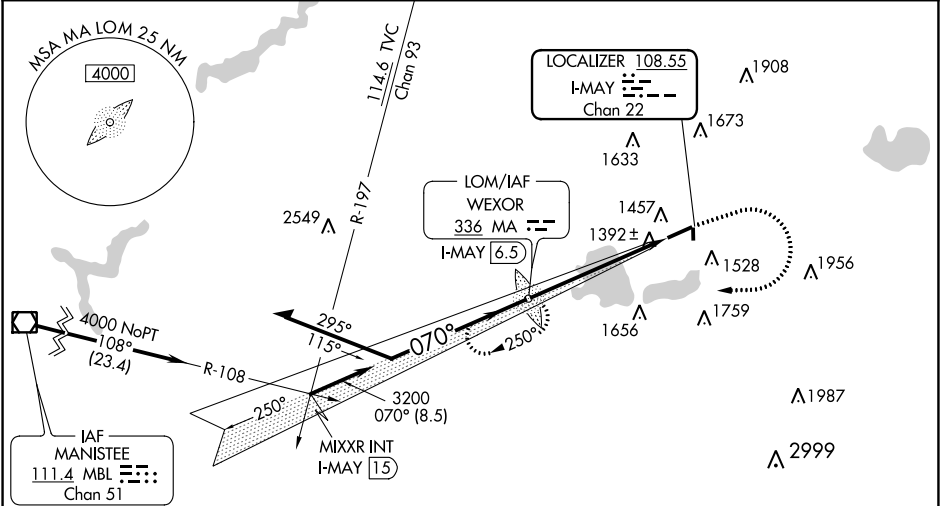


LOC/DME I-MAY 108.55 Chan 22	APP CRS 070°	Rwy Idg TDZE 1307 Apt Elev 1307	5000
---	------------------------	---	-------------

ILS or LOC RWY 7
WEXFORD COUNTY (CAD)

ADF Required. When local altimeter setting not received, use Houghton Lake altimeter setting and increase all DA 137 feet and all MDA 140 feet and increase S-ILS 7 all Cats visibility ½ mile, S-LOC 7 visibility Cat C ½ mile and Cat D ¼ mile, Circling visibility Cat C ½ mile and Cat D ¼ mile. Inoperative table does not apply to S-LOC 7 Cat C visibility when using Houghton Lake altimeter setting.	MALS F 	MISSED APPROACH: Climb to 2100, then climbing right turn to 3200 direct WEXOR LOM I-MAY 6.5 DME and hold.
--	-------------------	--

AWOS-3 128.325	MINNEAPOLIS CENTER 132.9 338.3	GCO 121.725	UNICOM 122.8 (CTAF) 0
--------------------------	--	-----------------------	---------------------------------



CATEGORY	A	B	C	D
S-ILS 7	1507-¾	200 (200-¾)		
S-LOC 7	1660-¾	353 (400-¾)	1660-1¼	353 (400-1¼)
CIRCLING	1900-1	593 (600-1)	1900-1½	593 (600-2)

