

WAAS CH 97427 W09A	APP CRS 096°	Rwy Idg TDZE 1321 Apt Elev 1328
--	------------------------	---

RNAV (GPS) RWY 9

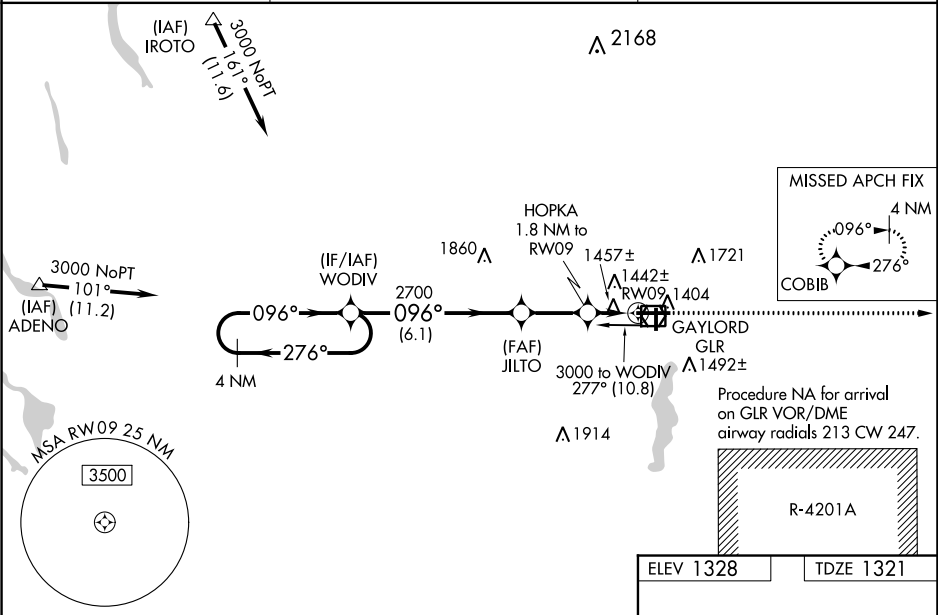
GAYLORD RGNL (GLR)

⚠ Circling to Rwy 18 and Rwy 36 NA at night. Baro-VNAV and VDP NA when using Grayling altimeter setting. For uncompensated Baro-VNAV systems, LNAV/VNAV NA below -17°C (2°F) or above 35°C (95°F). DME/DME RNP-0.3 NA. When local altimeter setting not received, use Grayling altimeter setting and increase all DA 71 feet and all MDA 80 feet. Increase LNAV/VNAV all Cats visibility ½ mile and Circling Cats C and D visibility ¼ mile. Inoperative table does not apply to LNAV Cats A and B. For inoperative MALSR increase LNAV Cats C and D visibility to 1½. When using Grayling altimeter setting increase LNAV Cats C and D visibility to 1¾.

MALSR

MISSED APPROACH:
Climb to 3100 direct
COBIB and hold.

ASOS 118.375	MINNEAPOLIS CENTER 134.6 354.05	UNICOM 122.8 (CTAF) 0
------------------------	---	---------------------------------



4 NM Holding Pattern

VGSI and RNAV glidepath not coincident (VGSI Angle 3.00/TCH 38).

WODIV

3000 ← 276°

096° →

GP 3.00° TCH 49

2700

JILTO

HOPKA 1.8 NM to RW09

1.1 NM to RW09

* LNAV only

3100 COBIB

6.1 NM

2.4 NM

0.7

1.1

CATEGORY	A	B	C	D
LPV DA		1571-1	250 (300-1)	
LNAV/VNAV DA		1732-1	411 (500-1)	
LNAV MDA		1720-1	399 (400-1)	
CIRCLING	1840-1 512 (600-1)	1940-1 612 (700-1)	1940-1¾ 612 (700-1¾)	2080-2½ 752 (800-2½)

ELEV 1328

TDZE 1321

REIL Rwy 18, 27 and 36 0

MIRL Rwy 18-36 0

HIRL Rwy 9-27 0