

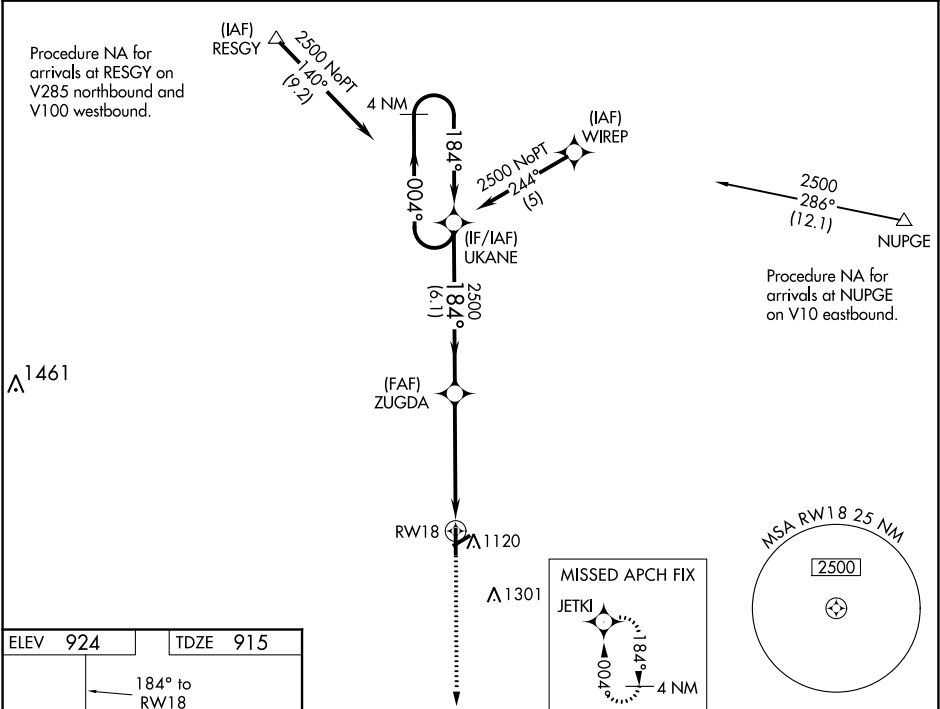
WAAS CH 90230 W18A	APP CRS 184°	Rwy Idg TDZE 915 Apt Elev 924	5201 915 924
--	------------------------	---	---

RNAV (GPS) RWY 18
KIRSCH MUNI (IRS)

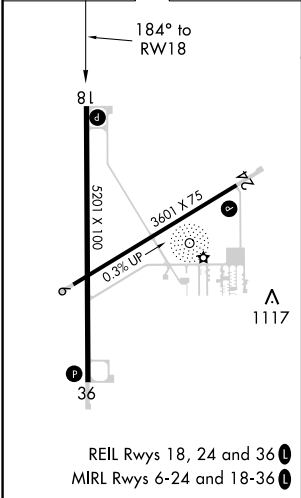
⚠ Circling to Rwy 6, 24 NA at night. Baro-VNAV NA. When VGSI inop, Straight-In/Circling Rwy 18 procedure NA at night. DME/DME RNP-0.3 NA. Visibility reduction by helicopters NA. When local altimeter setting not received, use Three Rivers altimeter setting and increase all DA/MDA 40 feet; increase LPV visibility all Cats and LNAV Cat C and D ½ mile, increase LNAV/VNAV vis all Cats ¼ mile.



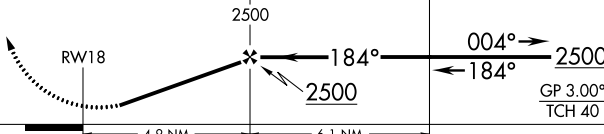
MISSED APPROACH: Climb to 3000 direct JETKI and hold.

AWOS-3 121.325	GREAT LAKES APP CON ★ 121.2 239.25	CLNC DEL 118.325	UNICOM 123.05 (CTAF) 📻
--------------------------	--	----------------------------	---



ELEV 924	TDZE 915
-----------------	-----------------



3000	JETKI	VGSI and RNAV glidepath not coincident (VGSI Angle 3.00/TCH 27).		4 NM Holding Pattern	
					
CATEGORY		A	B	C	D
LPV DA		1235-1½ 320 (400-1½)			
LNAV/VNAV DA		1229-1 314 (300-1)			
LNAV MDA		1400-1	485 (500-1)	1400-1¾	485 (500-1¾)
CIRCLING		1440-1	516 (600-1)	1440-1½ 516 (600-1½)	1620-2¼ 696 (700-2¼)