

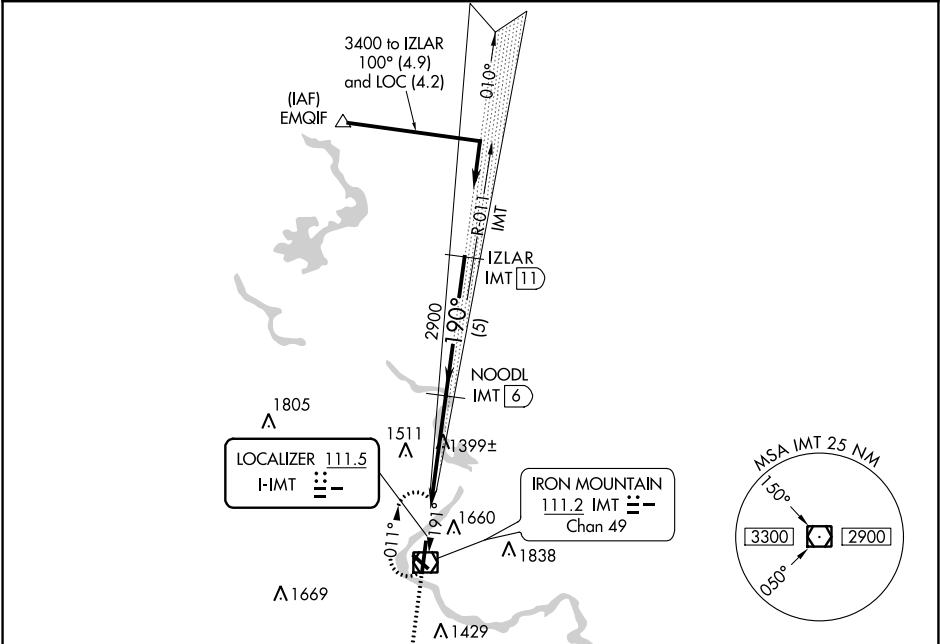
LOC I-IMT 111.5	APP CRS 190°	Rwy Idg TDZE 1182 Apt Elev 1182
---------------------------	------------------------	---

LOC/DME BC RWY 19

FORD (IMT)

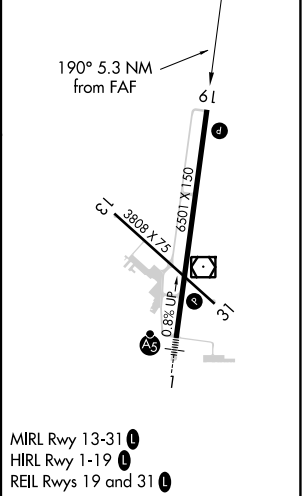
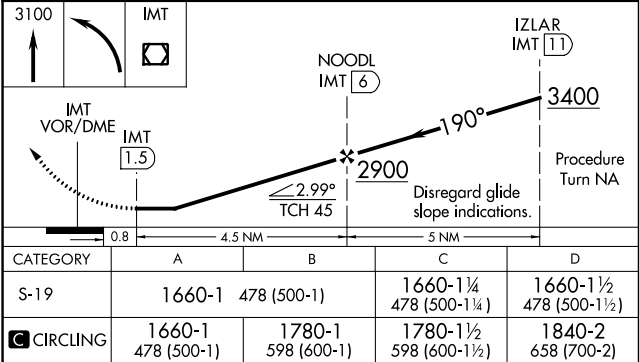
<div><div>⚠</div><div>Circling NA northeast of Rwy 19 and 31. DME from IMT VOR/DME. Simultaneous reception of I-IMT and IMT DME required. Helicopter visibility reduction below 1 SM NA. Rwy 19 Straight-in and Circling and Circling to Rwy 31 NA at night.</div></div>	<div><div>MISSED APPROACH:</div><div>Climb to 3100 then left turn direct IMT VOR/DME and hold.</div></div>
--	--

ASOS 119.025	MINNEAPOLIS CENTER 121.25 322.5	UNICOM 122.8 (CTAF) 0
------------------------	---	---------------------------------



ELEV 1182	D	TDZE 1182
-----------	---	-----------

BACK COURSE



EC-1, 03 DEC 2020 to 31 DEC 2020

EC-1, 03 DEC 2020 to 31 DEC 2020