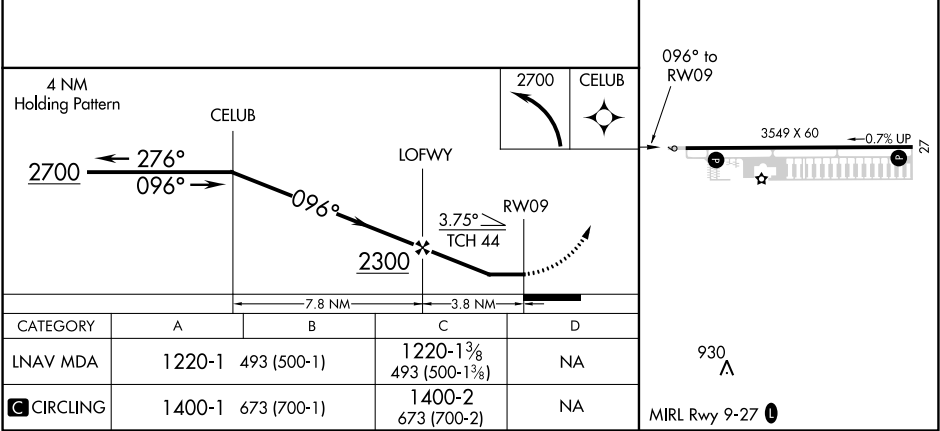
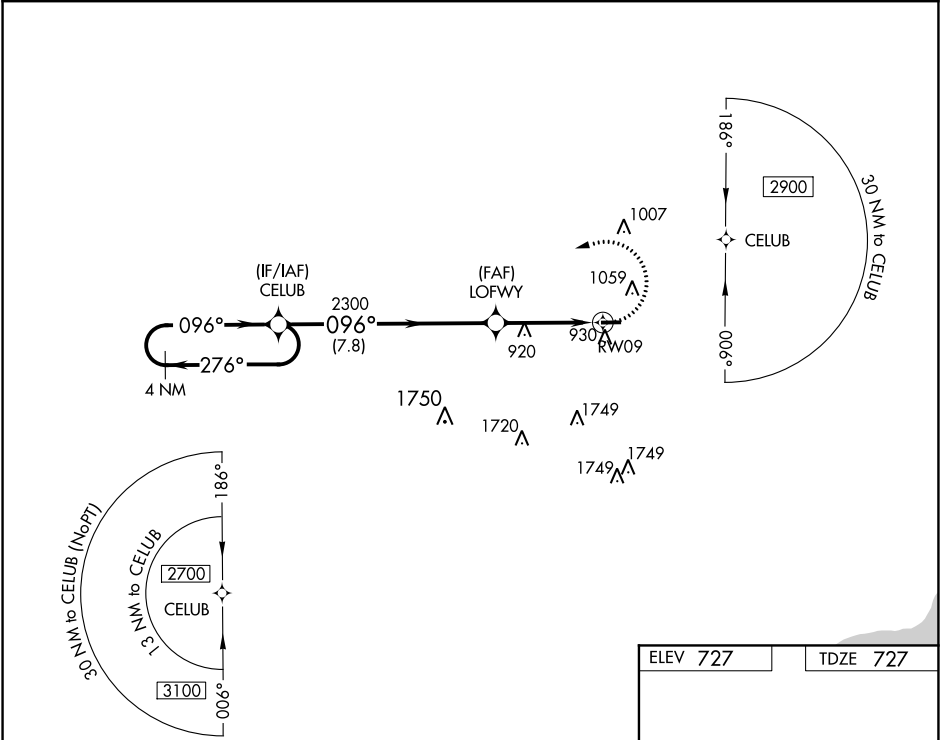


APP CRS 096°	Rwy Idg TDZE Apt Elev	3549 727 727
------------------------	-----------------------------	---

RNAV (GPS) RWY 9
OAKLAND/TROY (VLL)

T DME/DME RNP-0.3 NA. Straight-in Rwy 9 at night, operational VGSI required, remain on or above VGSI glidepath until threshold. Circling Rwy 27 at night. Rwy 9 helicopter visibility reduction below 1 SM NA.	MISSED APPROACH: Climbing left turn to 2700 direct CELUB and hold.
---	--

AWOS-3 119.475	DETROIT APP CON 134.3 284.0	UNICOM 123.05 (CTAF) 0
--------------------------	---------------------------------------	----------------------------------



EC-1, 03 DEC 2020 to 31 DEC 2020

EC-1, 03 DEC 2020 to 31 DEC 2020