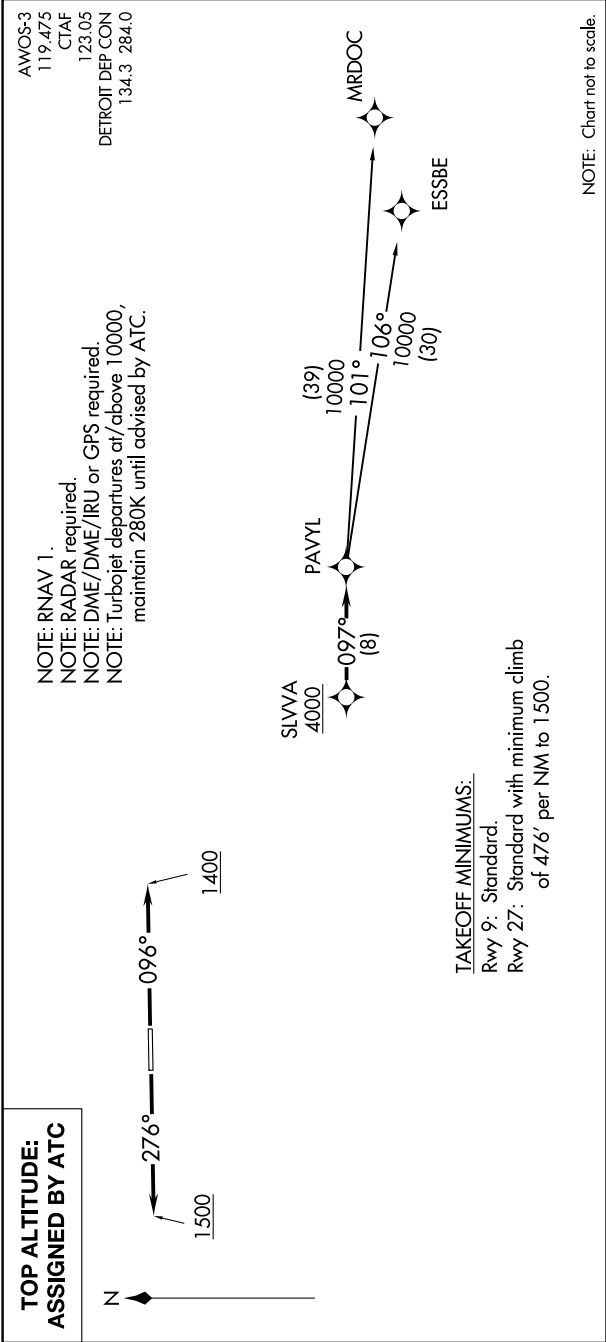


EC-1, 03 DEC 2020 to 31 DEC 2020



DEPARTURE ROUTE DESCRIPTION
<p><u>TAKEOFF RUNWAY 9:</u> Climb on heading 096° to 1400 then as assigned for RADAR vectors to cross SLVVA at or above 4000, thence...</p> <p><u>TAKEOFF RUNWAY 27:</u> Climb on heading 276° to 1500 then as assigned for RADAR vectors to cross SLVVA at or above 4000, thence...</p> <p>....on track 097° to PAVYL, then on (transition). Maintain ATC assigned altitude, expect filed altitude 10 minutes after departure.</p> <p>ESSBE TRANSITION (PAVYL2.ESSBE): MRDOC TRANSITION (PAVYL2.MRDOC):</p>

EC-1, 03 DEC 2020 to 31 DEC 2020