

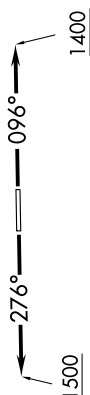
**TOP ALTITUDE:  
ASSIGNED BY ATC**

**TAKEOFF MINIMUMS:**

Rwy 9: Standard.

Rwy 27: Standard with minimum climb of 476' per NM to 1500.

AWOS-3  
119.475  
CTAF  
123.05  
DETROIT DEP CON  
134.3 284.0



NOTE: RNAV 1.

NOTE: RADAR required.

NOTE: DME/DME/IRU or GPS required.

NOTE: Turbojet departures at/above 10000, maintain 280K until advised by ATC.

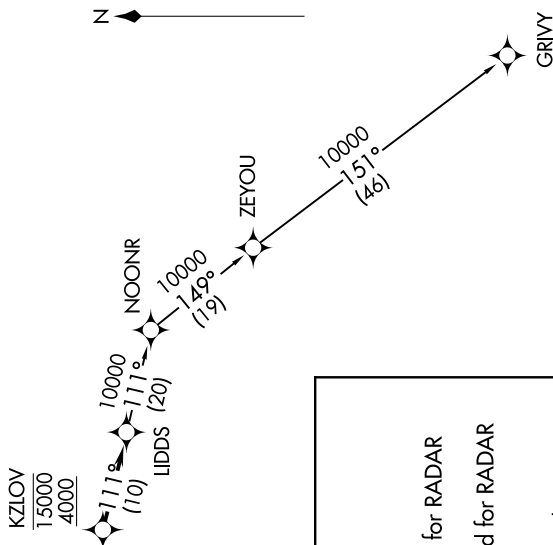
## DEPARTURE ROUTE DESCRIPTION

TAKEOFF RUNWAY 9: Climb on heading 096° to 1400 then as assigned for RADAR vectors to cross KZLOV between 4000 and 15000, thence...

TAKEOFF RUNWAY 27: Climb on heading  $276^{\circ}$  to 1500 then as assigned for RADAR vectors to cross KZLOV between 4000 and 15000, thence....

.....on track 111° to UDDS, then on (transition). Maintain ATC assigned altitude, expect filed altitude 10 minutes after departure.

GRIVY TRANSITION (LIDDS2.GRIVY):



NOTE: Chart not to scale.