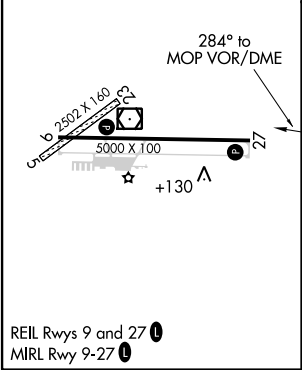
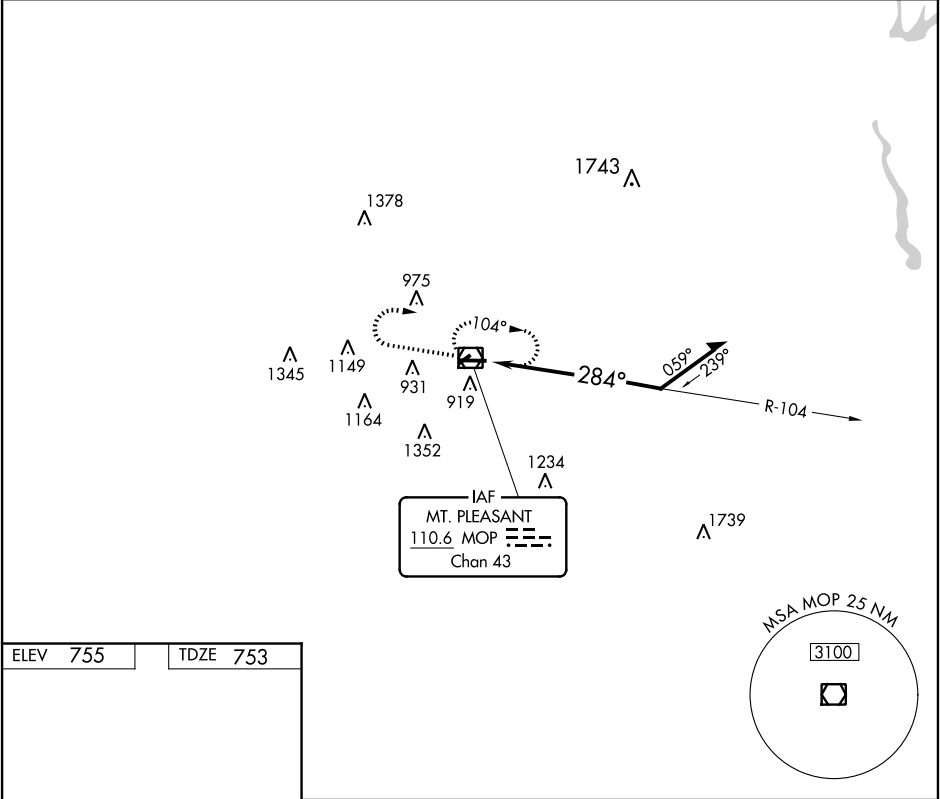




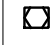
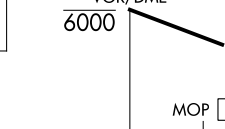
VOR/DME MOP	APP CRS	Rwy Idg	5000
110.6	284°	TDZE	753
Chan 43		Apt Elev	755

VOR RWY 27

MOUNT PLEASANT MUNI (MOP)

<div><div>⚠</div><div>When local altimeter setting not received, use Alma altimeter setting and increase all MDA 60 feet, S-27 Cat D and Circling Cat C visibilities ¼ mile. VDP NA when using Alma altimeter setting. Circling NA to Rwy 5 and 23. Rwy 27 helicopter visibility reduction below ¾ SM NA.</div></div>	<div>MISSED APPROACH: Climb to 2400 then right turn direct MOP VOR/DME and hold.</div>	
<div>AWOS-3 133.025</div>	<div>GREAT LAKES APP CON ★ 126.45 235.625</div>	<div>UNICOM 123.0 (CTAF) 0</div>



2400			MOP 					
CATEGORY	A	B	C	D				
S-27	1260-1	507 (600-1)	1260-1½	507 (600-1½)				
CIRCLING	1260-1	505 (600-1)	1320-1½ 565 (600-1½)	1360-2 605 (700-2)				

EC-1, 03 DEC 2020 to 31 DEC 2020

EC-1, 03 DEC 2020 to 31 DEC 2020