

APP CRS	Rwy Idg	5000
096°	TDZE	755
	Apt Elev	755

RNAV (GPS) RWY 9

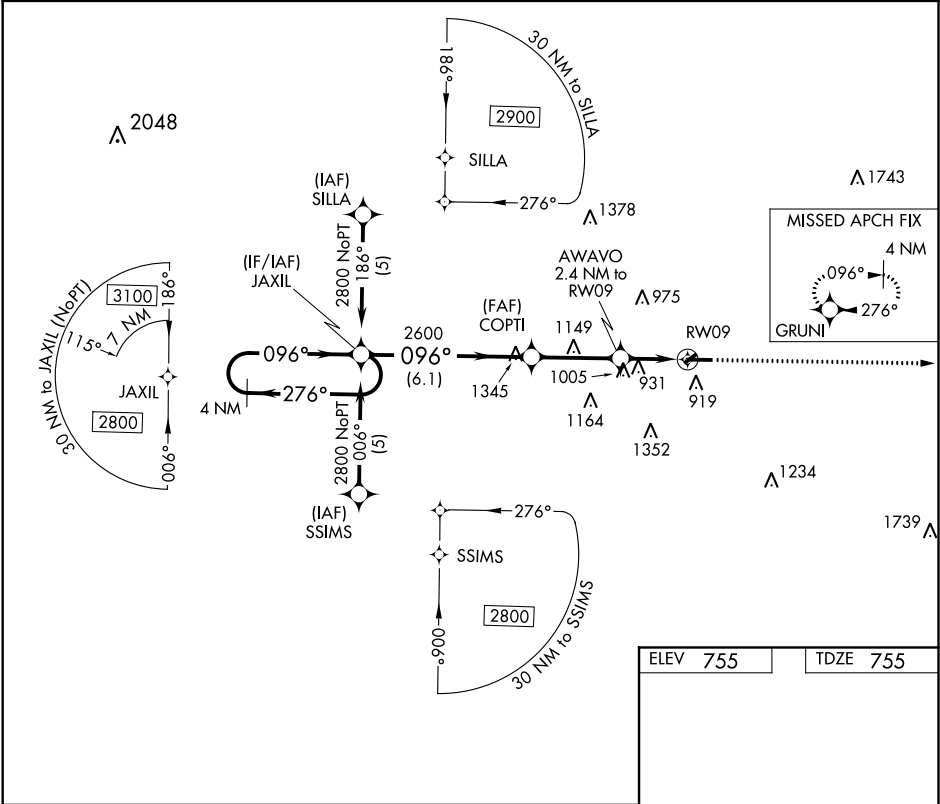
MOUNT PLEASANT MUNI (MOP)

⚠

DME/DME RNP-0.3 NA. When local altimeter setting not received use Altimeter setting and increase all MDA 60 feet, increase RNAV Cat C/D and Circling Cat C visibility ¼ mile. Circling NA to Rwy 5 and 23. Rwy 9 helicopter visibility reduction below ¾ SM NA.

MISSED APPROACH: Climb to 2800 direct GRUNI and hold.

AWOS-3 133.025	GREAT LAKES APP CON ★ 126.45 235.625	UNICOM 123.0 (CTAF) 0
-------------------	---	--------------------------



4 NM Holding Pattern

VGSI and RNAV glidepath not coincident (VGSI Angle 3.00/TCH 42).

2800 GRUNI

2800

276°

096°

096°

COPTI

3.05° TCH 40

2600

1540

2.4 NM

RW09

27

096° to RW09

2502 X 160

5000 X 100

+130 A

CATEGORY	A	B	C	D
RNAV MDA	1320-1	565 (600-1)	1320-1½ 565 (600-1½)	1320-1¾ 565 (600-1¾)
CIRCLING	1320-1	565 (600-1)	1320-1½ 565 (600-1½)	1360-2 605 (700-2)

REIL Rwy 9 and 27 0

MIRL Rwy 9-27 0

EC-1, 03 DEC 2020 to 31 DEC 2020

EC-1, 03 DEC 2020 to 31 DEC 2020