

WAAS  
CH **56505**  
**W01A**

APP CRS  
**004°**

Rwy Idg  
TDZE  
Apt Elev

**6501**  
**760**  
**772**

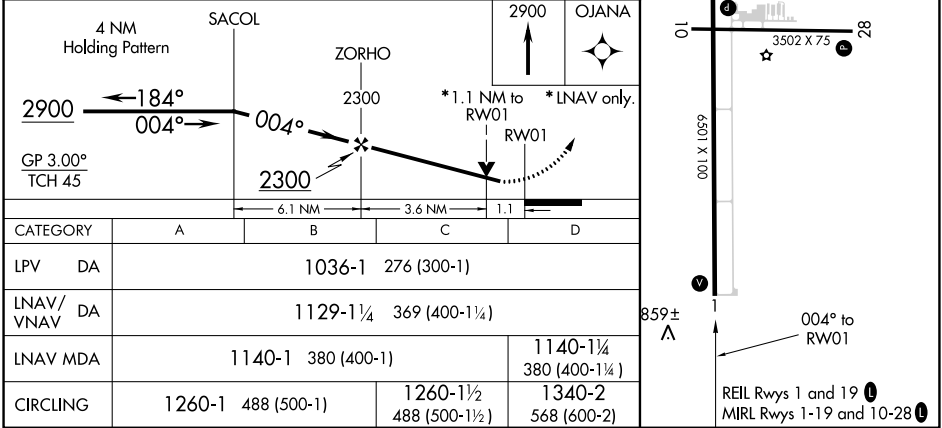
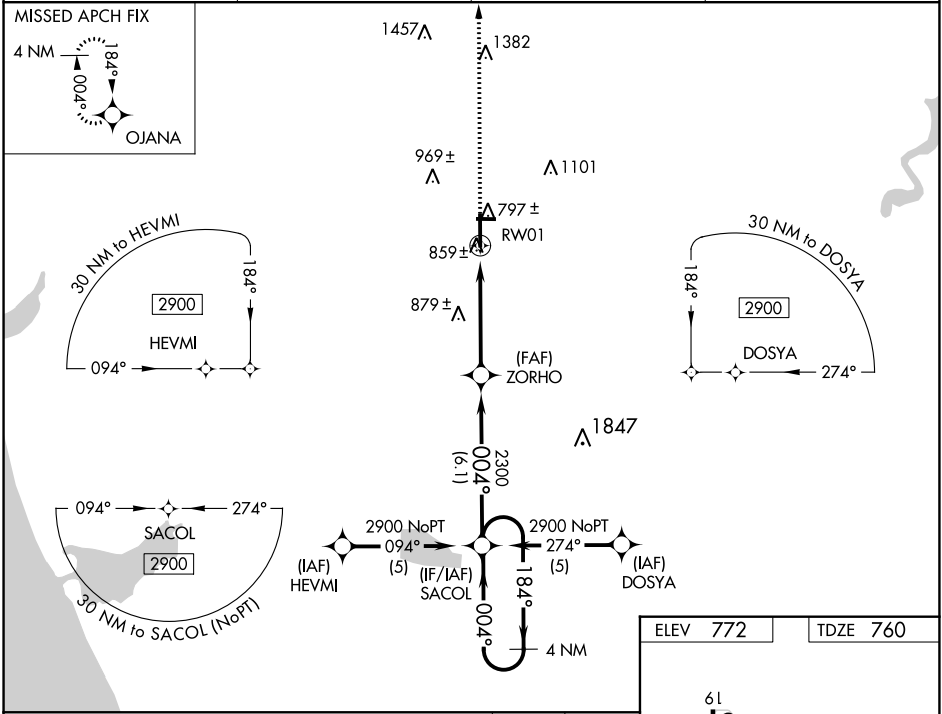
**RNAV (GPS) RWY 1**

FREMONT MUNI (F'FX)

Baro-VNAV NA when using Muskegon altimeter setting. For uncompensated Baro-VNAV systems, LNAV/VNAV NA below -16°C (4°F) or above 47°C (116°F). Rwy 1 helicopter visibility reduction below ¾ SM NA. DME/DME RNP-0.3 NA. When local altimeter setting not received, use Muskegon altimeter setting and increase all DA 65 feet, and all visibilities ¼ mile. Increase all MDA 80 feet, and Cat C/D visibilities ¼ mile. VDP NA when using Muskegon altimeter setting.

MISSED APPROACH:  
Climb to 2900 direct  
OJANA and hold.

AWOS-3 <b>118.775</b>	GREAT LAKES APP CON ★ <b>119.8 290.35</b>	CLNC DEL <b>118.25</b>	UNICOM <b>123.0 (CTAF) 0</b>
--------------------------	--	---------------------------	---------------------------------



EC-1, 03 DEC 2020 to 31 DEC 2020

EC-1, 03 DEC 2020 to 31 DEC 2020