

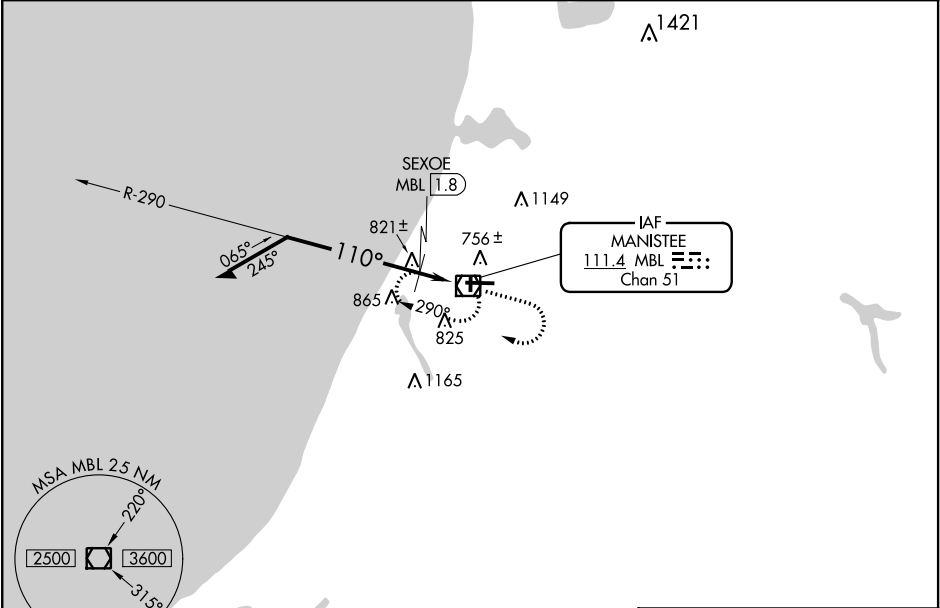
VOR/DME MBL	APP CRS	Rwy Idg	5501
111.4	110°	TDZE	621
Chan 51		Apt Elev	621

VOR RWY 10  
MANISTEE COUNTY-BLACKER (MBL)

**⚠** When local alimeter setting not received, use Ludington alimeter setting and increase all MDA 60 feet. Increase S-10 Cat C and D and Circling Cat C visibility 1/8 mile, increase SEXOE FIX minimums S-10 Cat C and D visibility 1/8 mile, and Cat C Circling visibility 1/4 mile. Helicopter visibility reduction below 3/4 SM NA. Night landing Rwy 1/19 NA.

MISSED APPROACH: Climb to 2300 then right turn direct MBL VOR/DME and hold.

AWOS-3PT 111.4	MINNEAPOLIS CENTER 120.85 322.35	UNICOM 122.8 (CTAF) 1
-------------------	-------------------------------------	--------------------------



VGSI and descent angles not coincident (VGSI Angle 3.00/TCH 29).  
Remain within 10 NM

2300 290° SEXOE MBL 1.8 110° \*1220 2.98° TCH 55 1.7 NM

2300 MBL VOR/DME 2300 MBL

\*1280 when using Ludington alimeter setting.

CATEGORY	A	B	C	D
S-10	1220-1	599 (600-1)	1220-1 3/4	599 (600-1 3/4)
CIRCLING	1220-1	599 (600-1)	1220-1 3/4 599 (600-1 3/4)	1300-2 1/4 679 (700-2 1/4)
SEXOE FIX MINIMUMS (DME REQUIRED)				
S-10	1080-1	459 (500-1)	1080-1 3/8	459 (500-1 3/8)
CIRCLING	1120-1 499 (500-1)	1160-1 539 (600-1)	1200-1 1/2 579 (600-1 1/2)	1300-2 1/4 679 (700-2 1/4)

ELEV 621 TDZE 621

727±

61 640± 678± 110° to MBL VOR/DME

5501 X 100

HIRL Rwy 10-28 1  
MIRL Rwy 1-19 1  
REIL Rwy 10 1

EC-1, 03 DEC 2020 to 31 DEC 2020

EC-1, 03 DEC 2020 to 31 DEC 2020