

LOC I-MBL	APP CRS	Rwy Idg	5501
108.35	277°	TDZE	621
		Apt Elev	621

ILS or LOC RWY 28
MANISTEE COUNTY-BLACKER (MBL)

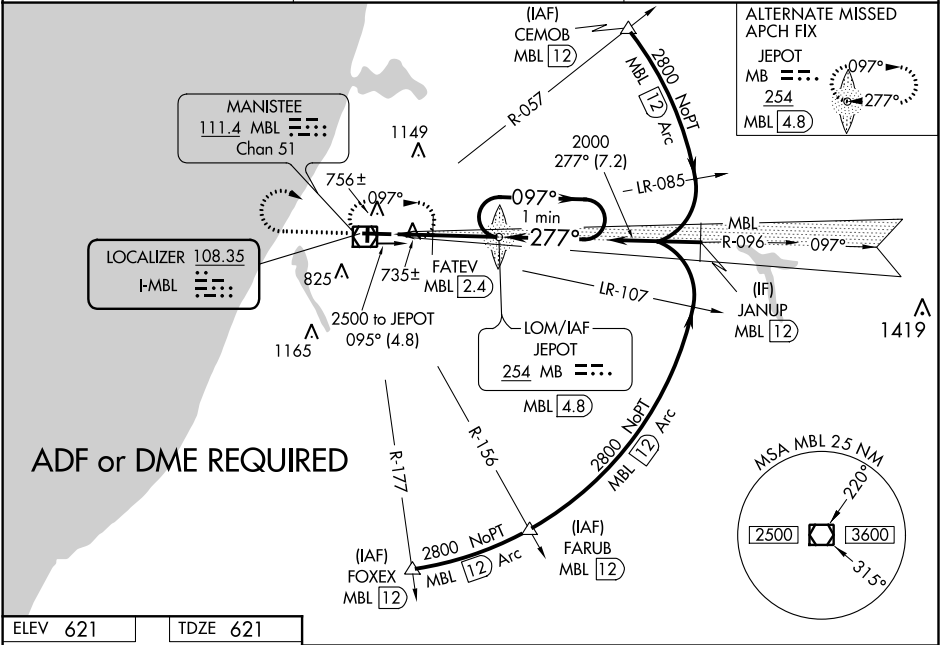
NA

Night landing: Rwy 1/19 NA. When local altimeter not received, use Ludington altimeter setting and increase all DA 50 feet and all MDA 60 feet; increase S-LOC 28 Cat C/D visibility ¼ mile, and Circling Cat C visibility ¼ mile. FATEV FIX minimums: increase S-LOC 28 Cat C/D visibility ½ mile and Circling Cat C ¼ mile.

MALSR

MISSED APPROACH: Climb to 1600 then climbing right turn to 2500 direct MBL VOR/DME and hold, continue climb-in-hold to 2500.

AWOS-3PT 111.4	MINNEAPOLIS CENTER 120.85 322.35	UNICOM 122.8 (CTAF) 0
-------------------	-------------------------------------	--------------------------



ELEV 621	TDZE 621
----------	----------

ADF or DME REQUIRED

HIRL Rwy 10-28

MIRL Rwy 1-19

REIL Rwy 10

FAF to MAP 3.9 NM

Knots	60	90	120	150	180
Min:Sec	3:54	2:36	1:57	1:34	1:18

VGSi and ILS glidepath not coincident (VGSi Angle 3.00/TCH 45).			
One Minute Holding Pattern			
*LOC only.			
*1160 *1220 when using Ludington altimeter setting.			
CATEGORY	A	B	D
S-ILS 28	821-½ 200 (200-½)		
S-LOC 28	1160-½	539 (600-½)	1160-1 539 (600-1)
CIRCLING	1160-1	539 (600-1)	1200-1½ 1300-2¼ 579 (600-1½) 679 (700-2¼)
FATEV FIX MINIMUMS			
S-LOC 28	1000-½	379 (400-½)	1000-¾ 379 (400-¾)
CIRCLING	1120-1	539 (600-1)	1200-1½ 1300-2¼ 499 (500-1) 579 (600-1½) 679 (700-2¼)

EC-1, 03 DEC 2020 to 31 DEC 2020

EC-1, 03 DEC 2020 to 31 DEC 2020