

LOC I-IWD
111.5

APP CRS
270°

Rwy Idg
TDZE
Apt Elev
6501
1230
1230

ILS or LOC RWY 27

GOGEBIC-IRON COUNTY (IWD)

▼

▲ NA

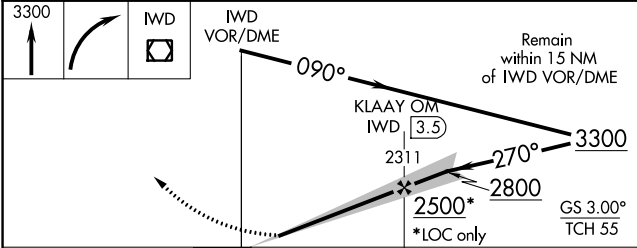
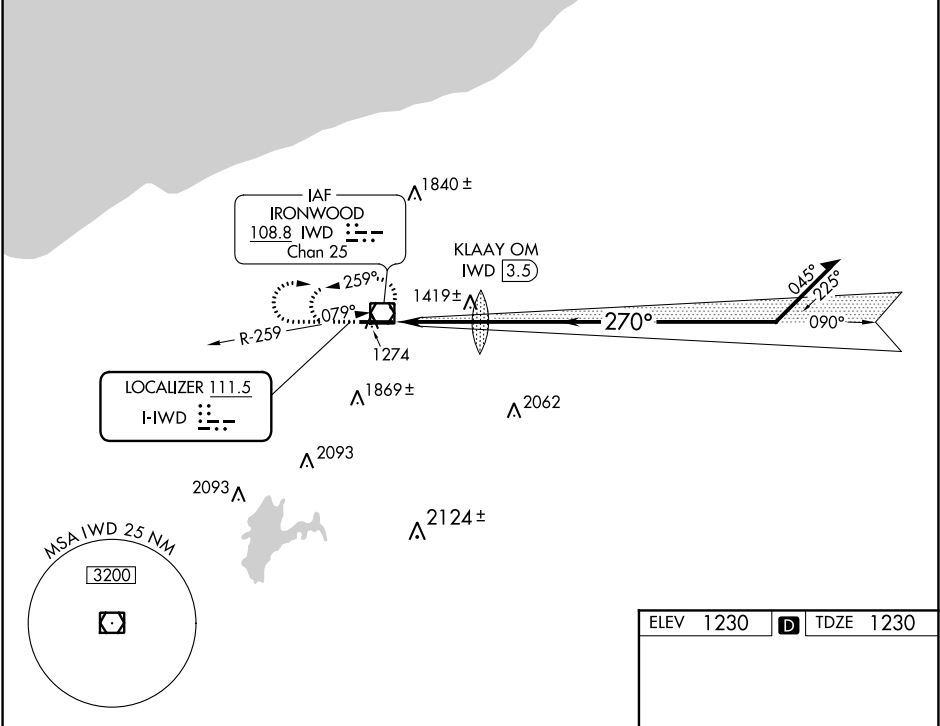
☄ -27°C

When local altimeter setting not received, use Ashland altimeter setting and increase all DA 132 feet and all MDA 140 feet, increase S-LOC 27 Cat C/D visibility ½ mile, Circling Cat A/B visibility ¼ mile and Circling Cat C ½ mile. For inop ALS when using Ashland altimeter setting, increase S-ILS 27 all Cats visibility to 1.

MALSR

MISSED APPROACH:
Climb to 3300 then right turn direct IWD VOR/DME and hold.

AWOS-3PT 125.175	MINNEAPOLIS CENTER 133.55	UNICOM 122.8 (CTAF) 0
----------------------------	-------------------------------------	---------------------------------



CATEGORY	A	B	C	D
S-ILS 27	1430-½	200 (200-½)		
S-LOC-27	1720-½ 490 (500-½)	1720-¾ 490 (500-¾)	1720-1 490 (500-1)	
CIRCLING	2100-1 870 (900-1)	2100-1¼ 870 (900-1¼)	2100-2½ 870 (900-2½)	2220-3 990 (1000-3)

ELEV 1230 D TDZE 1230

Diagram showing the final approach segment with altitudes and distances. Key features include:

- Altitudes: 1303±, 1307, 1318±.
- Distance: 6502 X 120, 270° 3.2 NM from FAF.

REIL Rwy 9 0
HIRL Rwy 9-27 0

FAF to MAP 3.2 NM

Knots	60	90	120	150	180
Min:Sec	3:12	2:08	1:36	1:17	1:04

EC-1, 03 DEC 2020 to 31 DEC 2020

EC-1, 03 DEC 2020 to 31 DEC 2020