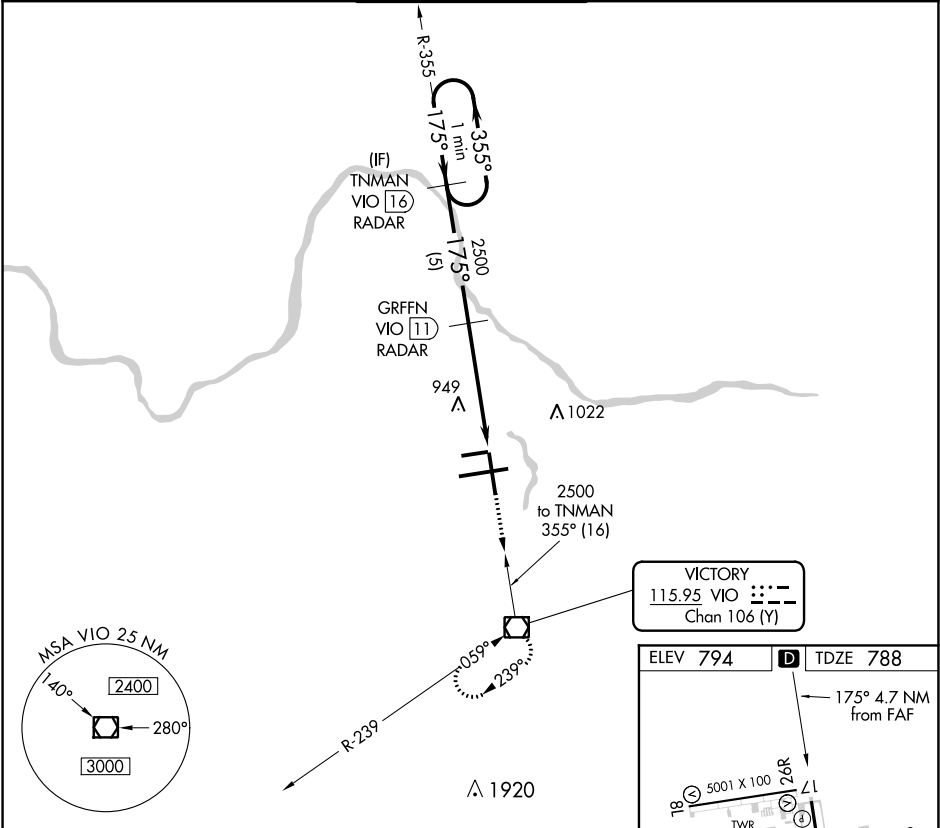


VOR/DME VIO	APP CRS	Rwy Idg	8501
115.95	175°	TDZE	788
Chan 106 (Y)		Apt Elev	794

VOR RWY 17

GERALD R FORD INTL (G.R.R.)

DME or RADAR required.		MISSED APPROACH: Climb to 3000 direct VIO VOR/DME and hold.		
When local altimeter setting not received, use Holland altimeter setting and increase all MDAs 80 feet and increase S-17 Cat D visibility ¼ SM. Rwy 17 helicopter visibility reduction below ¾ SM NA.				
ATIS	GREAT LAKES APP CON ★	GRAND RAPIDS TOWER ★	GND CON	CLNC DEL
118.725	128.4 257.6	135.65 (CTAF) 339.8	121.8	119.3
			UNICOM	122.95



One Minute Holding Pattern		TNMAN VIO 16 RADAR	GRFFN VIO 11 RADAR	3000	VIO
2500 ← 355° 175° → 2500					
VGSI and descent angles not coincident (VGSI Angle 3.00/TCH 50).			3.32° TCH 45		
		5 NM	3.5 NM	1.2	
CATEGORY	A	B	C	D	
S-17	1200-1	412 (500-1)	1200-1¼	412 (500-1¼)	
✪ CIRCLING	1280-1	486 (500-1)	1340-1½ 546 (600-1½)	1360-2 566 (600-2)	

