

WAAS CH <b>86713</b> <b>W26B</b>	APP CRS <b>267°</b>	Rwy Idg <b>10001</b> TDZE <b>790</b> Apt Elev <b>794</b>
--	------------------------	--

RNAV (GPS) RWY 26L

GERALD R FORD INTL (GRR)

ASR

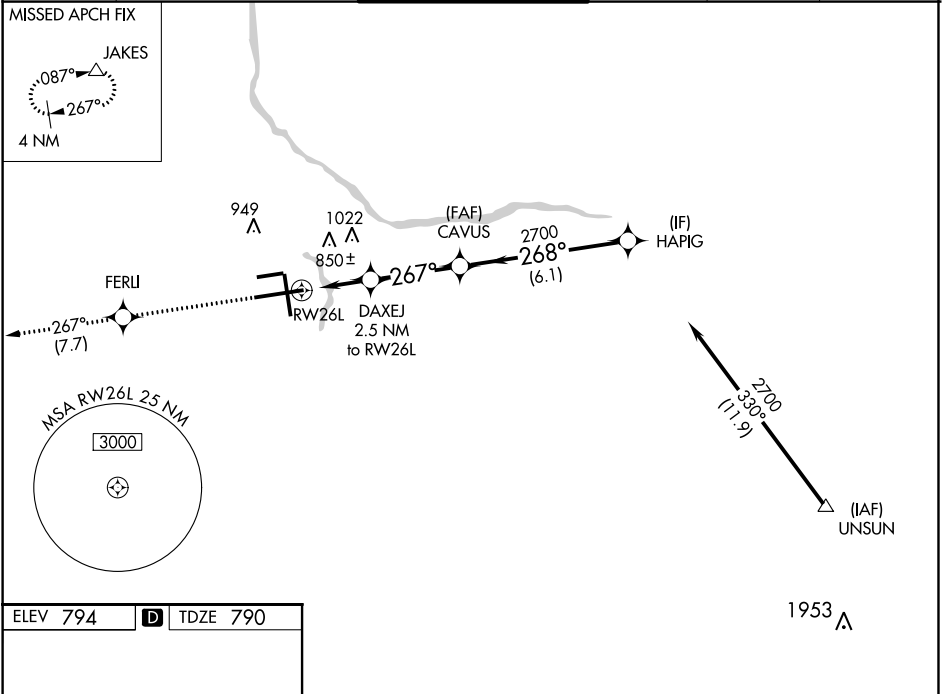
For uncompensated Baro-VNAV systems, LNAV/VNAV NA below -16°C (4°F) or above 54°C (130°F). DME/DME RNP-0.3 NA. For inoperative ALS, increase LNAV/VNAV Cat D visibility to RVR 5000.  
\*\* RVR 1800 authorized with use of FD or AP or HUD to DA.

MALSR

MISSED APPROACH:

Climb to 2700 direct FERLI and track 267° to JAKES and hold.

ATIS <b>118.725</b>	GREAT LAKES APP CON ★ <b>128.4 257.6</b>	GRAND RAPIDS TOWER ★ <b>135.65 (CTAF) 339.8</b>	GND CON <b>121.8</b>	CLNC DEL <b>119.3</b>	UNICOM <b>122.95</b>
------------------------	---	--	-------------------------	--------------------------	-------------------------



2700	FERLI	tr 267°	JAKES	VGSi and RNAV glidepath not coincident (VGSi Angle 3.00/TCH 73).	
			DAXEJ 2.5 NM to RW26L	CAVUS 2700	HAPIG
* LNAV only.			* 1.3 NM to RW26L	* 1640	GP 3.00° TCH 55
RW26L			1.3 NM	1.2 NM	3.2 NM
CATEGORY		A	B	C	D
LPV DA **		990/24 200 (200-½)			
LNAV/VNAV DA		1114/24 324 (400-½)			
LNAV MDA		1280/24	490 (500-½)	1280/40 490 (500-¾)	1280/50 490 (500-1)
CIRCLING		1280-1	486 (500-1)	1340-1½ 546 (600-1½)	1360-2 566 (600-2)