

LOC I-GRR 109.7	APP CRS 267°	Rwy Idg 10001 TDZE 790 Apt Elev 794
---------------------------	------------------------	--

ILS or LOC RWY 26L
GERALD R FORD INTL (G.R.R.)

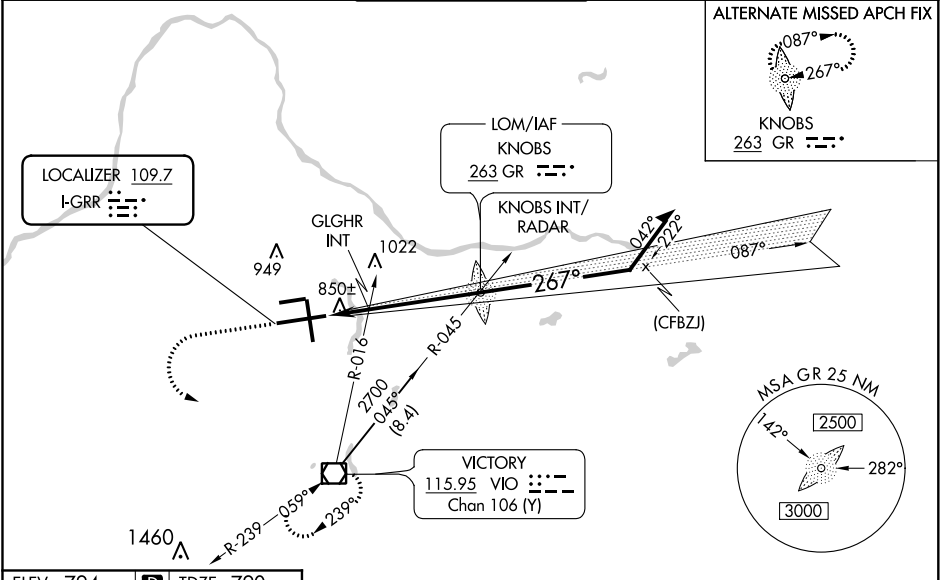
ASR

For inop MALSR when using GLGHR INT minimums, increase S-LOC 26L Cat D visibility to RVR 5000. For inop MALSR when using Holland altimeter setting, increase S-ILS 26L all Cats visibility to RVR 5000.
**RVR 1800 authorized with the use of FD or AP or HUD to DA.

MALSR

MISSED APPROACH:
Climb to 1300 then climbing left turn to 3000 direct VIO VOR/DME and hold.

ATIS 118.725	GREAT LAKES APP CON ★ 128.4 257.6	GRAND RAPIDS TOWER ★ 135.65 (CTAF) 0 339.8	GND CON 121.8	CLNC DEL 119.3	UNICOM 122.95
------------------------	---	--	-------------------------	--------------------------	-------------------------



ELEV 794 **D** TDZE 790

MIRL Rwy 8L-26L
REIL Rwys 8L, 17 and 26R
HIRL Rwys 8R-26L and 17-35

FAF to MAP 5.7 NM

Knots	60	90	120	150	180
Min:Sec	5:42	3:48	2:51	2:17	1:54

1300 3000 VIO

VGSI and ILS glidepath not coincident (VGSI Angle 3.00/TCH 73).
* LOC only.

GLGHR INT

1.7 NM 4 NM

CATEGORY	A	B	C	D
S-ILS 26L**	990/24 200 (200-½)			
S-LOC 26L	1360/24 570 (600-½)	1360/50 570 (600-1)	1360/60 570 (600-1½)	
CIRCLING	1360-1 566 (600-1)	1360-1½ 566 (600-½)	1360-2 566 (600-2)	
GLGHR INT MINIMUMS (DUAL VOR RECEIVERS REQUIRED)				
S-LOC 26L	1120/24 330 (400-½)			1120/40 330 (400-¾)
CIRCLING	1260-1 466 (500-1)	1340-1½ 546 (600-½)	1360-2 566 (600-2)	

EC-1, 03 DEC 2020 to 31 DEC 2020

EC-1, 03 DEC 2020 to 31 DEC 2020