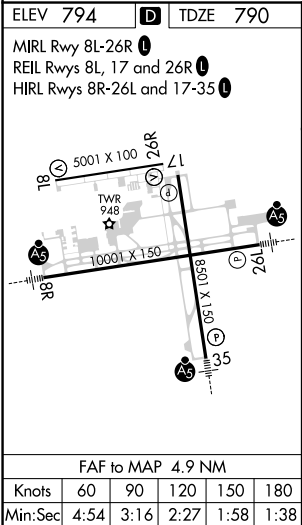
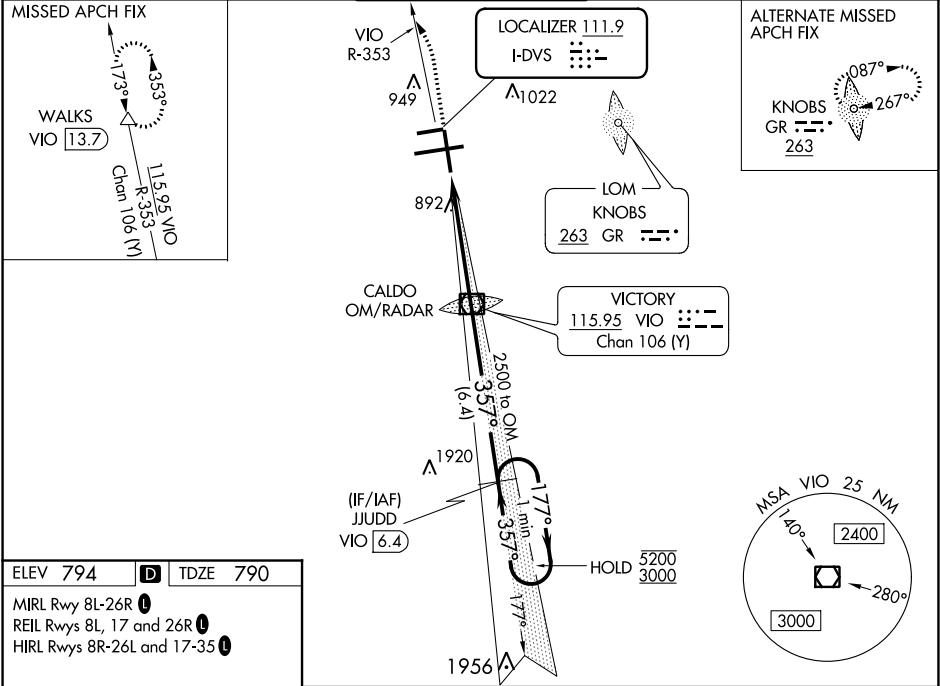





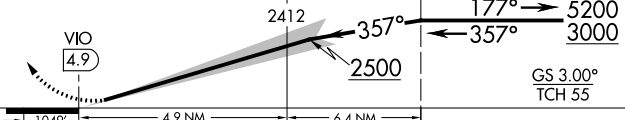
LOC I-DVS <b>111.9</b>	APP CRS <b>357°</b>	Rwy Idg TDZE Apt Elev <b>8501</b> <b>790</b> <b>794</b>
---------------------------	------------------------	--

ILS RWY 35 (SA CAT I & II)  
GERALD R FORD INTL (G.R.R.)

DME required. DME or RADAR required for procedure entry.		MALSR 	MISSED APPROACH: Climb to 1300 then climbing left turn to 3000 on VIO VOR/DME R-353 to WALKS 13.7 DME and hold.
SA CAT I: Requires specific OPSPEC, MSPEC, or LOA approval and use of HUD to DH. SA CAT II: Reduced lighting: requires specific OPSPEC, MSPEC, or LOA approval and use of autoland or HUD to touchdown. Procedure NA when tower closed.	ASR		

ATIS <b>118.725</b>	GREAT LAKES APP CON ★ <b>128.4 257.6</b>	GRAND RAPIDS TOWER ★ <b>135.65 (CTAF) 339.8</b>	GND CON <b>121.8</b>	CLNC DEL <b>119.3</b>	UNICOM <b>122.95</b>
------------------------	---	--	-------------------------	--------------------------	-------------------------



1300	3000	WALKS	VGSI and ILS glidepath not coincident (VGSI Angle 3.00/TCH 74).		
			VIO VOR/DME CALDO OM/RADAR	JJUDD VIO 6.4	One Minute Holding Pattern
					GS 3.00° TCH 55
CATEGORY	A		B	C	D
S-ILS 35	SA CAT I		RA 160/14	150	DA 940
S-ILS 35	SA CAT II		RA 122/12	100	DA 890
SA CATEGORY I & II ILS - SPECIAL AIRCREW & AIRCRAFT CERTIFICATION REQUIRED					