

WAAS CH 73014 W03A	APP CRS 034°	Rwy Idg 5999 TDZE 624 Apt Elev 625
----------------------------------------	------------------------	---------------------------------------------------------------

RNAV (GPS) RWY 3
MENOMINEE RGNL (MNM)

RNP APCH.

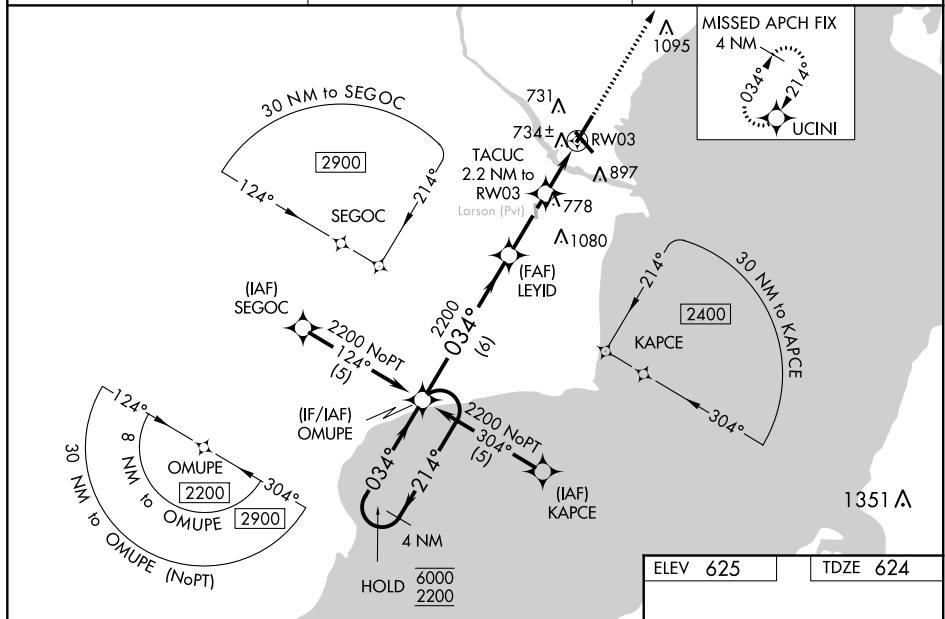
⚠ Circling Rwy 14, 32 NA at night. Baro-VNAV and VDP NA when using Sturgeon Bay altimeter setting. For uncompensated Baro-VNAV systems, LNAV/VNAV NA below -16°C or above 54°C. When local altimeter setting not received, use Sturgeon Bay altimeter setting and increase all DA/MDA 60 feet, increase Circling Cat C/D visibility ½ SM. For Inop MALSR when using Sturgeon Bay altimeter setting increase LNAV MDA visibility Cat C/D to 1½. Inop table does not apply to LPV and LNAV/VNAV all Cats and LNAV MDA Cats A/B.

MALSR



MISSED APPROACH:
Climb to 2300 direct
UCINI and hold.

AWOS-3PT 109.6	GREEN BAY APP CON ★ 120.3 338.2	UNICOM 122.8 (CTAF) 0
--------------------------	-------------------------------------------	---------------------------------



4 NM Holding Pattern

OMUPE

LEYID 2200

TACUC 2.2 NM to RW03

*1.1 NM to RW03

*1360

RW03

GP 3.00°
TCH 49

CATEGORY	A	B	C	D
LPV DA		824-1	200 (200-1)	
RNAV/ VNAV DA		1150-1½	526 (600-1)	
RNAV MDA		1000-1	376 (400-1)	
C CIRCLING	1200-1	575 (600-1)	1200-1½ 575 (600-1½)	1380-2½ 755 (800-2½)

