

LOC I-TNQ <u>108.7</u>	APP CRS 034°	Rwy Idg 5999 TDZE 624 Apt Elev 625
----------------------------------	------------------------	---

ILS or LOC RWY 3
MENOMINEE RGNL (MNM)

ADF required. ADF or RADAR required for procedure entry.

NA Circling Rwy 14, 32 NA at night. Autopilot coupled approach NA below 1574. Inop table does not apply. When local altimeter setting not received, use Sturgeon Bay altimeter setting and increase all DA/MDA 60 feet, Circling Cat C/D visibility ¼ SM. For inop ALS when using Sturgeon Bay altimeter setting, increase S-LMC 3 Cat C/D visibility to 1½ SM.

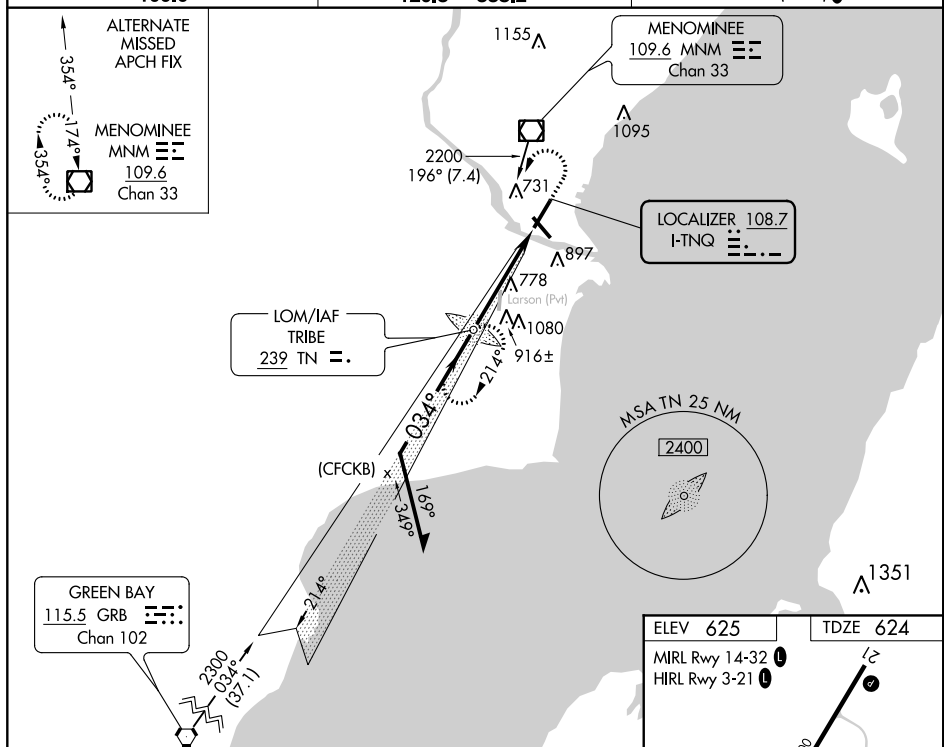
MALSR



MISSED APPROACH:
Climb to 2200 then
left turn direct
TRIBE LOM and hold.

AWOS-3PT
109.6

GREEN BAY APP CON ★
120.3 338.2

UNICOM
122.8 (CTAF) **L**

Remain
within 10 NM


TRIBE LOM

2200

TRIBE

2200
GS 3.00°
TCH 50

2200

CATEGORY	A	B	C	D
S-ILS 3		824-1	200 (200-1)	
S-LOC 3		980-1	356 (400-1)	
 CIRCLING	1200-1	575 (600-1)	1200-1½ 575 (600-1½)	1380-2½ 755 (800-2½)

ELEV 625		TDZE 624
----------	--	----------

TDZF 624

MIRL Rwy 14-32 L

HIRL Rwy 3-21 **L**

4° 4.3 NM

FAF to MAP 4.3 NM

Knots	60	90	120	150	180
Min:Sec	4:18	2:52	2:09	1:43	1:26