

WAAS CH 56301 W02A	APP CRS 022°	Rwy Idg TDZE 623 Apt Elev 623
--	------------------------	---

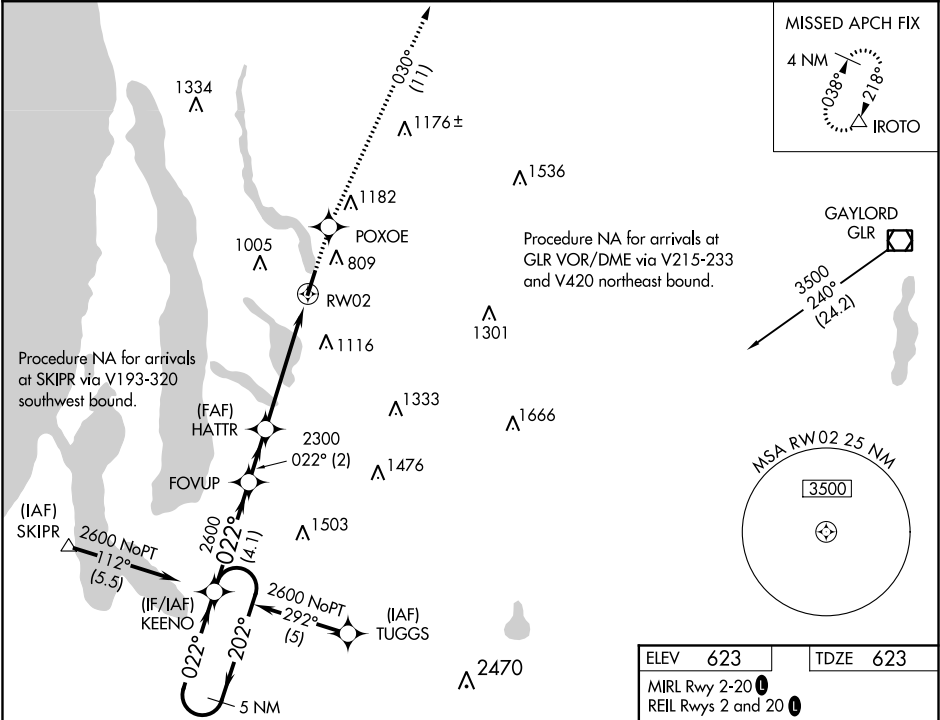
RNAV (GPS) RWY 2
ANTRIM COUNTY (ACB)

▼ DME/DME RNP-0.3 NA. VDP NA when using Cherry Capital altimeter setting. If local altimeter setting not received, use Cherry Capital altimeter setting and increase all DAs/MDAs 60 feet.

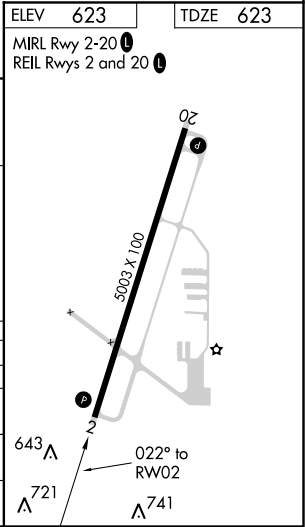
▲

MISSED APPROACH: Climb to 3000 direct POXOE and via 030° track to IROTO and hold.

AWOS-3 119.275	MINNEAPOLIS CENTER 132.9 338.3	GCO 121.725	UNICOM 122.7 (CTAF) 0
--------------------------	--	-----------------------	---------------------------------



5 NM Holding Pattern				
KEENO		FOVUP		
2600		2600		
← 202°		→ 022°		
GP 3.00°		TCH 43		
4.1 NM		2 NM		
3.4 NM		1.7 NM		
CATEGORY	A	B	C	D
LPV DA	908-1 285 (300-1)			
LNAV/VNAV DA	NA			
LNAV MDA	1220-1	597 (600-1)	1220-1½ 597 (600-1½)	1220-1¾ 597 (600-1¾)
CIRCLING	1260-1 637 (700-1)	1340-1 717 (800-1)	1360-2 737 (800-2)	1440-2¾ 817 (900-2¾)



EC-1, 03 DEC 2020 to 31 DEC 2020

EC-1, 03 DEC 2020 to 31 DEC 2020