

LOC/DME I-ESC 109.3 Chan 30	APP CRS 094°	Rwy ldg 6498 TDZE 609 Apt Elev 609
--	------------------------	---

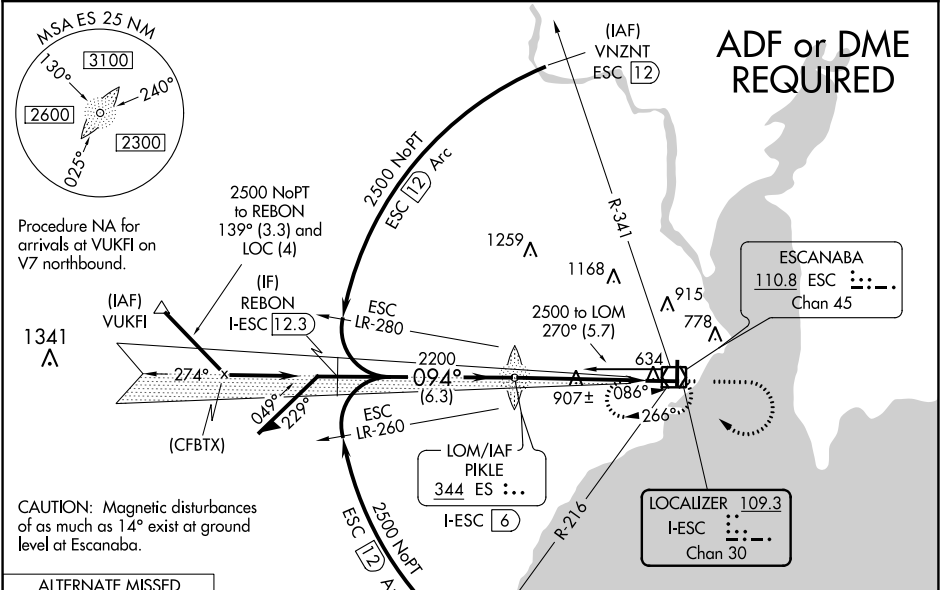
ILS or LOC RWY 9
DELTA COUNTY (ESC)

ADF or DME required. Night landing: Rwy 19 NA. When local altimeter setting not received, use Marquette altimeter setting and increase all DA 178 feet and all MDA 180 feet, increase S-ILS 9 all Cats visibility 1/8 mile, S-LOC 9 Cats C/D visibility 1/2 mile, Circling Cats C visibility 1/2 mile and Circling Cat D visibility 1/4 mile. For inoperative MALSR when using Marquette altimeter setting, increase S-ILS 9 all Cats visibility to 1 mile, and S-LOC 9 Cats C/D visibility to 2 miles.

MALSR

MISSED APPROACH: Climb to 2100 then climbing right turn to 2500 direct ESC VOR/DME and hold.

AWOS-3PT 121.425	MINNEAPOLIS CENTER 127.65	UNICOM 122.8 (CTAF) 0
----------------------------	-------------------------------------	---------------------------------



ELEV 609	D	TDZE 609
----------	---	----------

