


LOC I-PTK 111.1	APP CRS 095°	Rwy Idg TDZE 981 Apt Elev 981
---------------------------	------------------------	---

ILS or LOC RWY 9R
OAKLAND COUNTY INTL (PTK)

RADAR required for procedure entry.

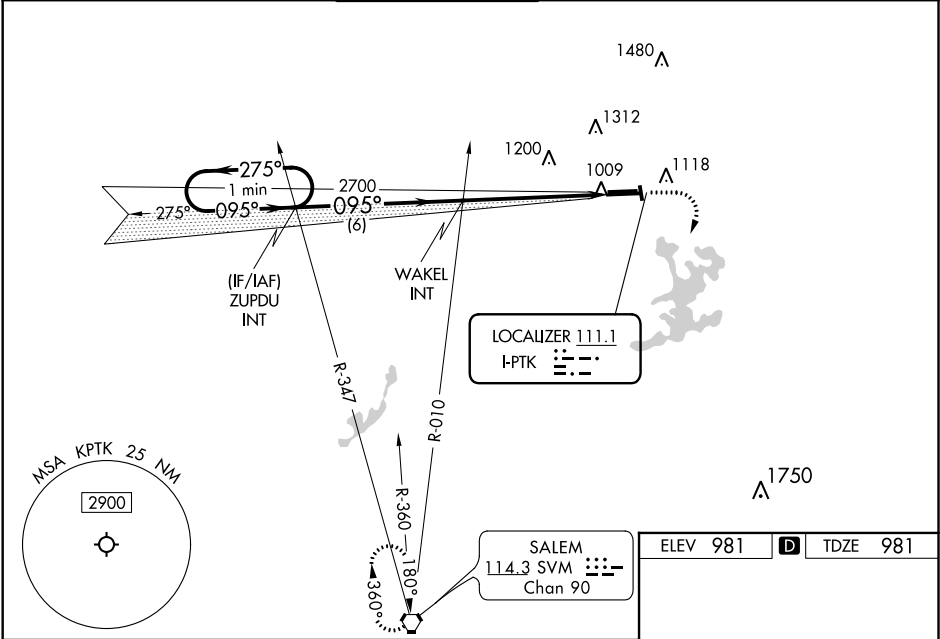
▼ Circling Rwy 9L, 36 NA at night. When local altimeter setting not received, use Coleman A Young Muni altimeter setting and increase DA to 1286 feet and all MDA 120 feet, increase S-LOC 9R Cat B visibility to RVR 4000, Cat C/D visibility $\frac{3}{8}$ SM, and Circling Cat B/C/D visibility $\frac{1}{2}$ SM. For inop MALSR, increase S-LOC 9R Cat C/D visibility to $\frac{1}{3}$ SM. For inop MALSR, when using Coleman A Young altimeter, increase S-ILS 9R all Cats visibility to RVR 4500, and increase S-LOC 9R Cat C/D visibility to 2 SM. **RVR 1800 authorized with the use of FD or AP or HUD to DA, NA when using Coleman A Young Muni altimeter setting.

MALSR




MISSED APPROACH:
Climb to 1600 then climbing right turn to 3000 direct SVM VORTAC and hold.

ATIS 125.025	DETROIT APP CON 132.35 284.0	PONTIAC TOWER ★ 120.5 (CTAF) 0	GND CON 121.9	CLNC DEL 118.25	UNICOM 122.95
------------------------	--	--	-------------------------	---------------------------	-------------------------



1600 3000 SVM



ZUPDU INT WAKEL INT

CATEGORY	A	B	C	D
S-ILS 9R	** 1181/24		200 (200-½)	
S-LOC 9R	1620/24	639 (700-½)	1620-1⅓	639 (700-1⅓)
C CIRCLING	1620-1	639 (700-1)	1640-1¾ 659 (700-1¾)	1640-2 659 (700-2)

HIRL Rwy 9R-27L **0**
MIRL Rwy 9L-27R
REIL Rwy 27L **0**
REIL Rwy 9L and 27R

FAF to MAP 5.3 NM

Knots	60	90	120	150	180
Min:Sec	5:18	3:32	2:39	2:07	1:46

EC-1, 03 DEC 2020 to 31 DEC 2020

EC-1, 03 DEC 2020 to 31 DEC 2020