

**TOP ALTITUDE:
ASSIGNED BY ATC**

DEPARTURE ROUTE DESCRIPTION

TAKEOFF RUNWAY 4: Climb on heading 037° to 1200 then as assigned for RADAR vectors to cross JWELS at or above 4000, then....
TAKEOFF RUNWAY 17: Climb on heading 174° or as assigned for RADAR vectors to cross JWELS at or above 4000, then....
TAKEOFF RUNWAY 22: Climb on heading 217° or as assigned for RADAR vectors to cross JWELS at or above 4000, then....
TAKEOFF RUNWAY 35: Climb on heading 006° to 1800 then as assigned for RADAR vectors to cross JWELS at or above 4000, then....

.....on track 218° to SNDRS, then on (transition). Maintain ATC assigned altitude, expect filed altitude 10 minutes after departure.

BGHRT TRANSITION (SNDRS2.BGHRT):

NOTE: RNAV 1.

NOTE: RADAR required.

NOTE: DME/DME/IRU or GPS required.

NOTE: Turbojet departures at/above 10000, maintain 280K until advised by ATC.

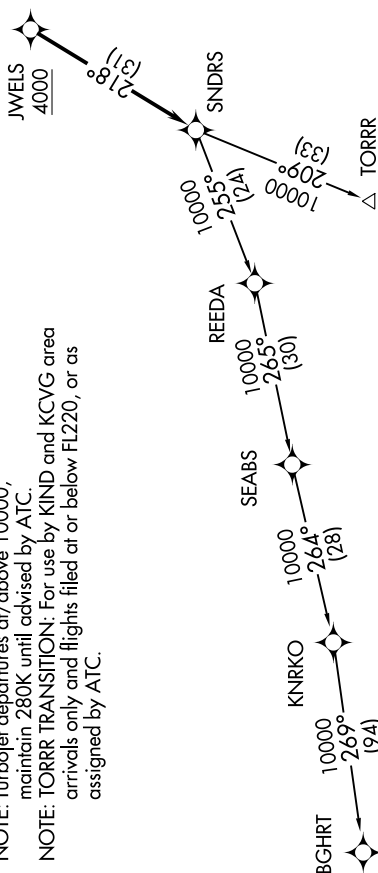
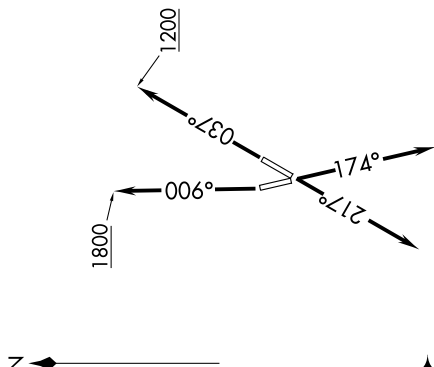
NOTE: TORR TRANSITION: For use by KIND and KCVG area arrivals only and flights filed at or below FL220, or as assigned by ATC.

TAKEOFF MINIMUMS:

Rwys 4, 17, 22: Standard.

Rwy 35: Standard with minimum climb of 500' per NM to 1100.

NOTE: Chart not to scale.



SNDRS TWO DEPARTURE (RNAV)

(SNDRS2.SNDRS) 15AUG19

DETROIT/GROSSE ILE, MICHIGAN

GROSSE ILE MUNI (ONZ)