
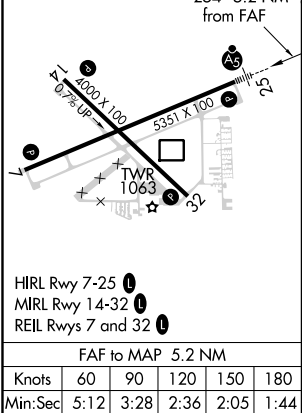
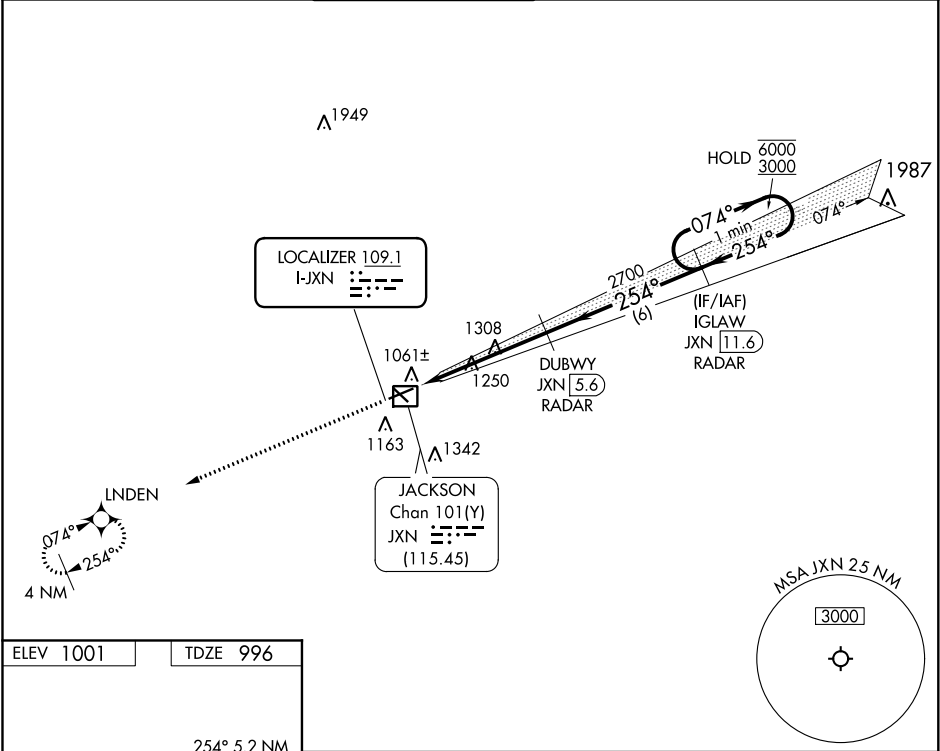


LOC I-JXN 109.1	APP CRS 254°	Rwy Idg TDZE Apt Elev 5351 996 1001
---------------------------	------------------------	---

ILS or LOC RWY 25
JACKSON COUNTY-REYNOLDS FIELD (JXN)

RNAV-1 GPS required. RADAR required for procedure entry. DME or RADAR required.			<div>MALSR</div> <div></div>	MISSED APPROACH: Climb to 3000 direct LNDEN and hold.		
<div><div><div>V</div><div>A</div></div></div> For inop ALS, increase S-LOC 25 Cat C/D visibility to 1¾ SM.						
ATIS 125.725	GREAT LAKES APP CON ★ 127.3 335.575	JACKSON TOWER ★ 128.475 (CTAF) 0 257.8	GND CON 121.9	CLNC DEL 121.9	UNICOM 122.95	



ELEV 1001		TDZE 996	
3000		LNDEN	
*LOC only.		IGLAW JXN 11.6 RADAR	
JXN 2.1		DUBWY JXN 5.6 RADAR	
JXN 0.4		2700	
1.8		3.4 NM	
6 NM		1 Minute Holding Pattern	
CATEGORY		A	
S-ILS 25		1196-½ 200 (200-½)	
S-LOC 25		1620-½ 624 (700-½)	
CIRCLING		1620-1 619 (700-1)	
GS 3.00° TCH 45		1660-1¾ 659 (700-1¾)	
		1660-2 659 (700-2)	