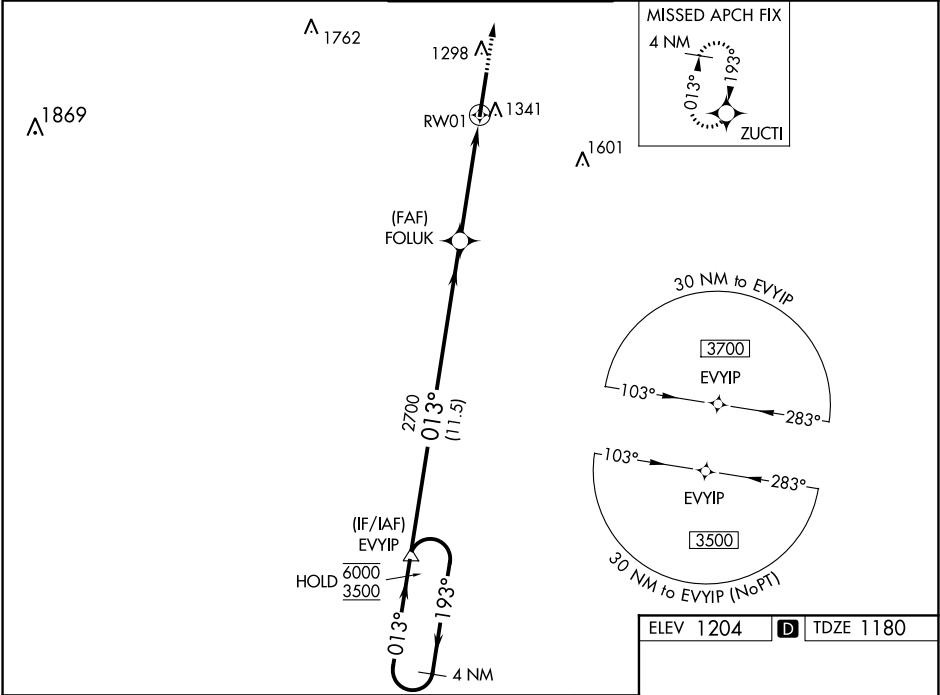


WAAS CH <b>97431</b> <b>W01A</b>	APP CRS <b>013°</b>	Rwy Idg TDZE <b>1180</b> Apt Elev <b>1204</b>
--	------------------------	---

RNAV (GPS) RWY 1  
SAWYER INTL (SAW)

RNP APCH.	MALSR 	MISSED APPROACH: Climb to 3500 direct ZUCTI and hold.
▼ For inop ALS, increase LNAV Cat C/D visibility to 1½ SM. For uncompensated Baro-VNAV systems, LNAV/VNAV NA below -17°C or above 54°C.		

AWOS-3 <b>118.375</b>	MINNEAPOLIS CENTER <b>119.1 290.2</b>	SAWYER TOWER ★ <b>119.975 (CTAF) 0</b>	GND CON <b>121.65</b>	UNICOM <b>122.7</b>
--------------------------	--	---	--------------------------	------------------------



4 NM Holding Pattern		3500		ZUCTI	
GP 3.00° TCH 50				*LNAV only.	
6000 ← 193°		EVYIP		FOLUK 2700	
3500 → 013°		013°		*1.2 NM to RW01	
		2700		RW01	
		11.5 NM		3.4 NM	
				1.2	
CATEGORY	A	B	C	D	
LPV DA	1380-½		200 (200-½)		
LNAV/ VNAV DA	1503-½		323 (300-½)		
LNAV MDA	1600-½	420 (400-½)	1600-¾	420 (400-¾)	
CIRCLING	1680-1	476 (500-1)	1820-1¾ 616 (700-1¾)	1820-2 616 (700-2)	

