

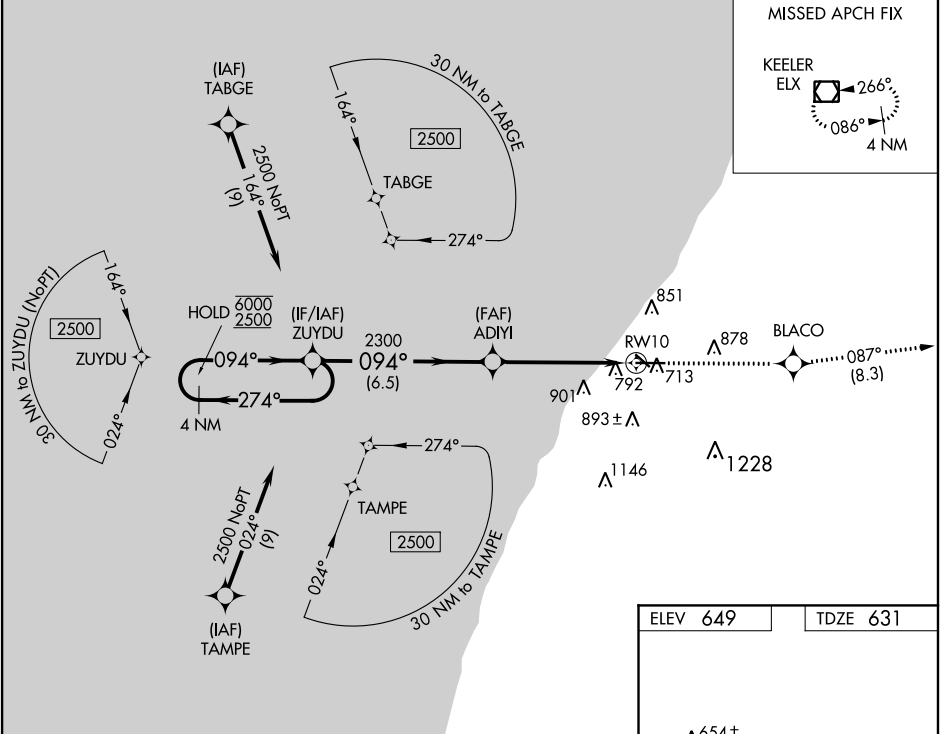
WAAS CH 86912 W10A	APP CRS 094°	Rwy Idg TDZE 631 Apt Elev 649
--	------------------------	---

RNAV (GPS) RWY 10

SOUTHWEST MICHIGAN RGNL (BEH)

RNP APCH.	MISSED APPROACH: Climb to 2500 direct BLACO and on track 087° to ELX VOR/DME and hold.
<div><div></div><div>Rwy 10 helicopter visibility reduction below ¾ SM NA. For uncompensated Baro-VNAV systems, LNAV/VNAV NA below -20°C or above 54°C.</div></div>	

ASOS 121.55	SOUTH BEND APP CON* 118.55 257.8	SOUTH BEND CLNC DEL 119.7	UNICOM 123.0 (CTAF) 0
-----------------------	--	-------------------------------------	---------------------------------



4 NM Holding Pattern		ZUYDU	ADIYI	2500 ↑	BLACO ✦	tr 087°	ELX ◻
6000 2500		←274° 094°→	094°	2300	* 1.4 NM to RW10		
GP 3.00° TCH 35			2300	* LNAV only			
		6.5 NM	3.7 NM	1.4 NM			
CATEGORY	A	B	C	D			
LPV DA	881-7/8 250 (300-7/8)						
LNAV/ VNAV DA	1068-1½ 437 (500-1½)						
LNAV MDA	1100-1 469 (500-1)			1100-1¾ 469 (500-1¾)			

