

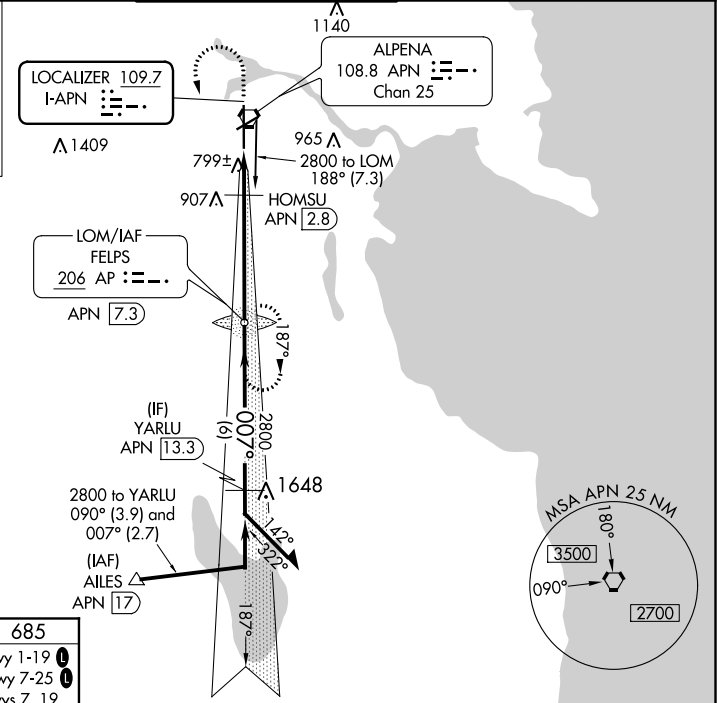
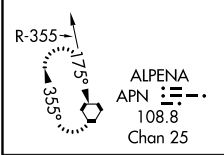
LOC I-APN 109.7	APP CRS 007°	Rwy Idg TDZE Apt Elev	9001 685 690
---------------------------	------------------------	-----------------------------	---

ILS or LOC RWY 1
ALPENA COUNTY RGNL (APN)

ADF required.		MALSR	MISSED APPROACH: Climb to 1100 then climbing left turn to 2800 direct AP LOM and hold.
For inop ALS, increase S-LOC 1 Cat C/D visibility to 1 ½ SM.			
-32°C			

ASOS 120.675	ALPENA APP CON ★ 128.425 379.3	ALPENA TOWER ★ 121.35 (CTAF) 318.1	GND CON 121.9 275.8	UNICOM 122.95
------------------------	--	--	-------------------------------	-------------------------

ALTERNATE MISSED APCH FIX



ELEV 690 **D** TDZE 685

HIRL Rwy 1-19 **1**
MIRL Rwy 7-25 **1**
REIL Rwys 7, 19 and 25 **1**

FAF to MAP 6.3 NM

Knots	60	90	120	150	180
Min:Sec	6:18	4:12	3:09	2:31	2:06

1100		2800	AP	FELPS LOM APN 7.3		Remain within 10 NM
*LOC only.		HOMSU APN 2.8	APN 1.1	2761	187°	2800
1260*		1.7 NM	4.6 NM	2800	007°	2800
CATEGORY		A	B	C	D	
S-ILS 1		885-½ 200 (200-½)				
S-LOC 1		1260-½	575 (600-½)	1260-1¼	575 (600-1¼)	
HOMSU FIX MINIMUMS						
S-LOC 1		1140-½ 455 (500-½)				

EC-1, 03 DEC 2020 to 31 DEC 2020

EC-1, 03 DEC 2020 to 31 DEC 2020