

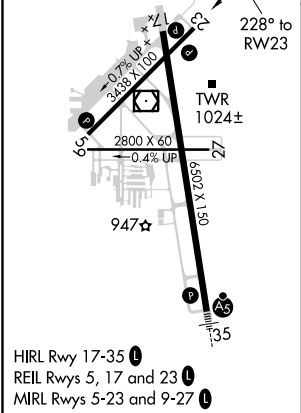
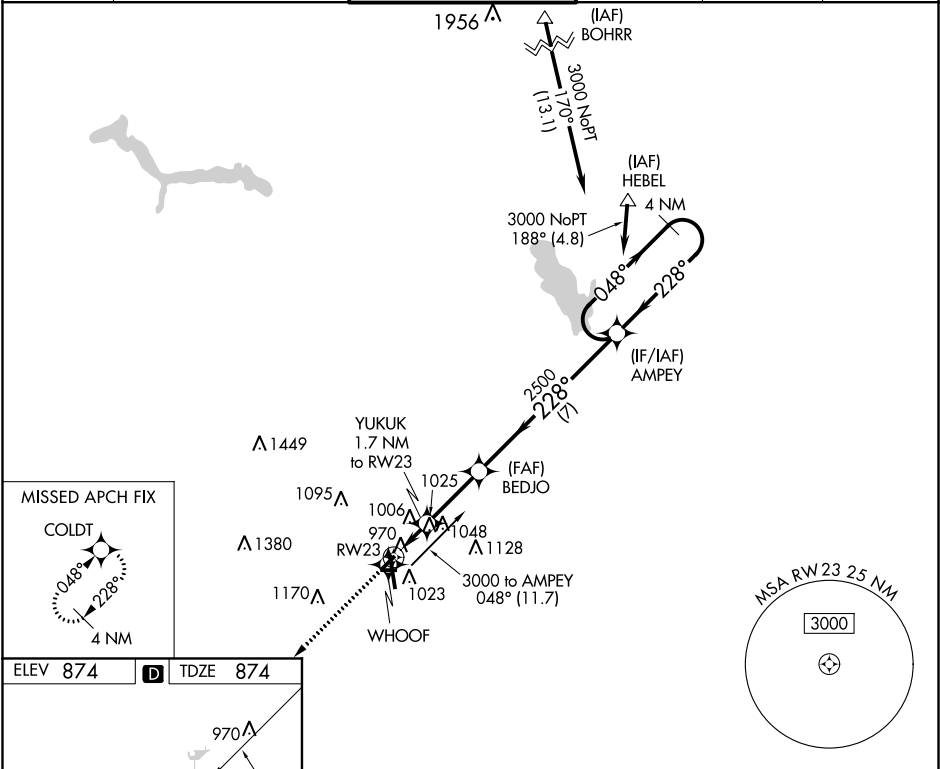
WAAS CH <b>61021</b> <b>W23A</b>	APP CRS <b>228°</b>	Rwy Idg TDZE Apt Elev	<b>3439</b> <b>874</b> <b>874</b>
--	------------------------	-----------------------------	---

RNAV (GPS) RWY 23  
KALAMAZOO/BATTLE CREEK INTL (AZO)

RNP APCH

ASR	Circling Rwy 5, 9, 17, 23, 27 NA at night. Rwy 23 helicopter visibility reduction below 1 SM NA. Straight-in Rwy 23 NA at night.	MISSED APPROACH: Climb to 2700 direct COLDT and hold.
-----	--	---

ATIS <b>127.25</b>	GREAT LAKES APP CON * <b>121.2 239.25</b>	KALAMAZOO TOWER* <b>118.3 (CTAF) 0 257.875</b>	GND CON <b>121.9</b>	CLNC DEL <b>121.75</b>	UNICOM <b>122.95</b>
-----------------------	--	---	-------------------------	---------------------------	-------------------------



	2700	COLDT	AMPEY	4 NM Holding Pattern
	YUKUK 1.7 NM to RW23	BEDJO	AMPEY	048° → 3000
	1520	2500		
	1.7 NM	2.6 NM	7 NM	
CATEGORY	A	B	C	D
LP MDA	1220-1	346 (400-1)		NA
LNAV MDA	1280-1	406 (500-1)	1280-1 1/8 406 (500-1 1/8)	NA
CIRCLING	1380-1	506 (600-1)	1480-1 3/4 606 (700-1 3/4)	NA