

WAAS CH 82010 W05A	APP CRS 053°	Rwy Idg TDZE Apt Elev	8002 666 668
--	------------------------	-----------------------------	---

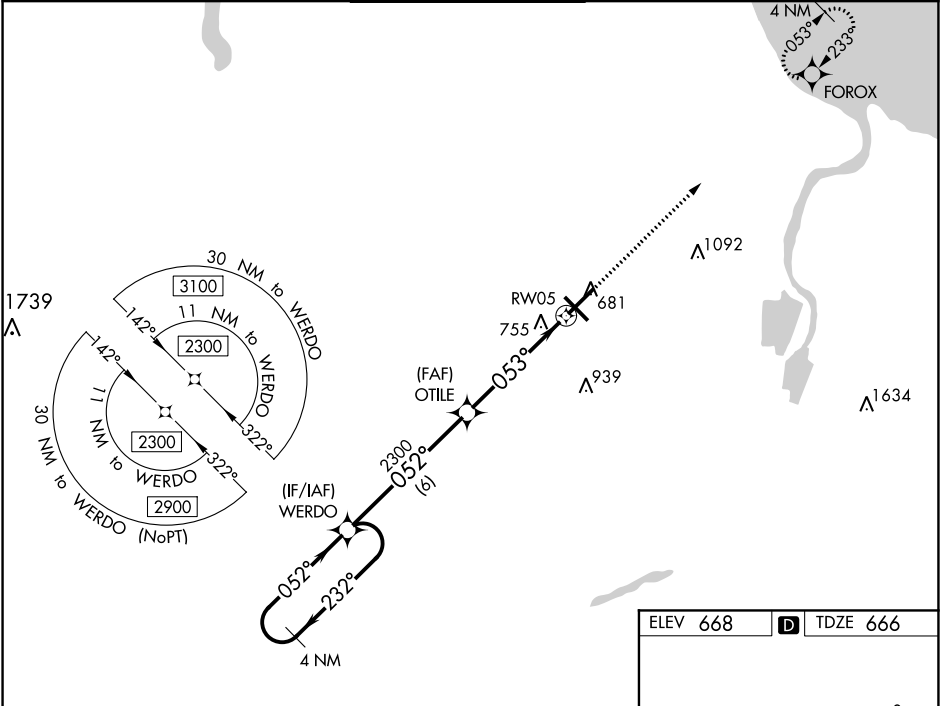
RNAV (GPS) RWY 5
MBS INTL (MBS)

▼ For uncompensated Baro-VNAV systems, LNAV/VNAV NA below -18°C (0°F) or above 54°C (130°F). DME/DME RNP-0.3 NA. For inoperative ALS, increase LNAV/VNAV all Cats visibility to RVR 4500 and LNAV Cats C/D visibility to RVR 6000.
** RVR 1800 authorized with use of FD or AP or HUD to DA.

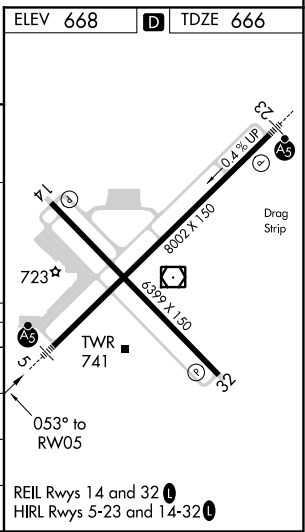
MALSR

MISSED APPROACH:
Climb to 2300 direct
FOROX and hold.

ATIS 125.925	GREAT LAKES APP CON★ 126.45 235.625	SAGINAW TOWER ★ 120.1(CTAF) 257.7	GND CON 121.7	CLNC DEL 121.85	UNICOM 122.95
------------------------	---	---	-------------------------	---------------------------	-------------------------



4 NM Holding Pattern					2300 FOROX
GP 3.00° TCH 50					*1.1 NM to RW05
2300 ← 232° → 052° → 052° → 2300					*LNAV only.
6 NM 3.9 NM 1.1 NM					RW05
CATEGORY	A	B	C	D	
LPV DA**		866/24	200 (200-½)		
LNAV/ VNAV DA		955/24	289 (300-½)		
LNAV MDA	1080/24	414 (500-½)	1080/40	414 (500-¾)	
CIRCLING	1080-1 412 (500-1)	1120-1 452 (500-1)	1240-1½ 572 (600-1½)	1240-2 572 (600-2)	



EC-1, 03 DEC 2020 to 31 DEC 2020

EC-1, 03 DEC 2020 to 31 DEC 2020