

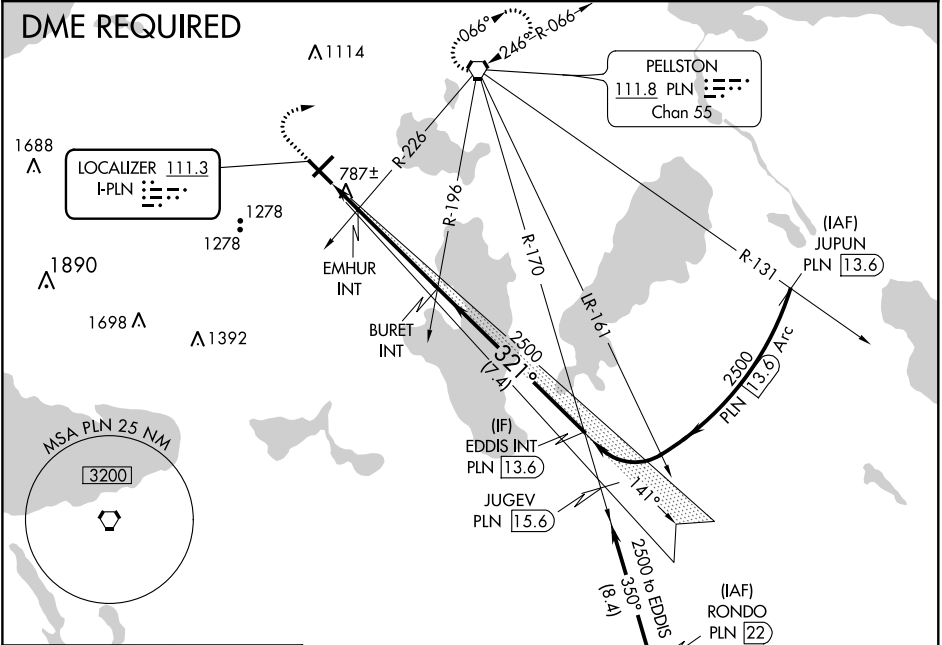
LOC I-PLN	APP CRS	Rwy Idg	6513
111.3	321°	TDZE	712
		Apt Elev	721

PELLSTON RGNL AIRPORT OF EMMET COUNTY (PLN)

ILS or LOC RWY 32

<p>When local altimeter setting not received, use Harbor Springs altimeter setting and increase DA to 940, and all MDA 40 feet; increase S-LOC 32 Cat D, Circling Cat C and EMHUR fix minimums S-LOC 32 Cat C, Circling Cat C visibility ¼ mile. Circling Rwy 5 NA at night.</p>	<p>MALS</p>	<p>MISSED APPROACH: Climb to 1400 then climbing right turn to 2600 direct PLN VORTAC and hold.</p>
--	-------------	--

ASOS 119.025	MINNEAPOLIS CENTER 134.6 354.05	UNICOM 123.0 (CTAF) 0
-----------------	------------------------------------	--------------------------



ELEV 721	D	TDZE 712
HIRL Rwy 14-32		
MIRL Rwy 5-23		
REIL Rwy 5, 14, and 23		
FAF to MAP 5.4 NM		
Knots	60	90
Min:Sec	5:24	3:36

1400	2600	PLN
*LOC only.	EMHUR INT	EDDIS INT
1.5 NM	3.9 NM	7.4 NM
CATEGORY	A	B
S-ILS 32	912-½	200 (200-½)
S-LOC 32	1220-½	508 (500-½)
CIRCLING	1260-1	1300-1
EMHUR FIX MINIMUMS (DUAL VOR RECEIVERS REQUIRED)	1080-½	368 (400-½)
S-LOC 32	1080-½	368 (400-½)
CIRCLING	1260-1	1300-1